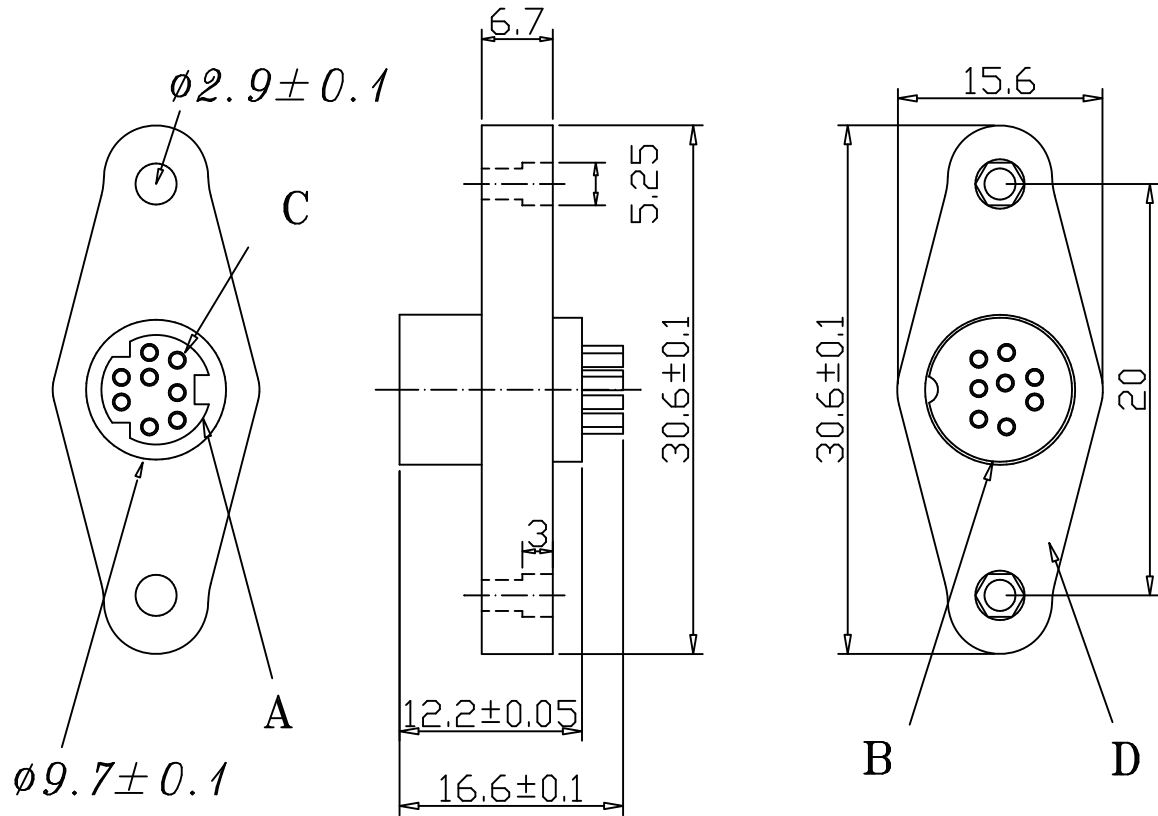


**MATERIALS:**

- A).HOUSING NYLON 66 + FIBLER
- B).METAL SHELL BRASS NICKEL PLATED
- C).PIN PHOSPHOR BRANZE SILVER PLATED
- D).BODY ABS

**SPECIFICATIONS:**

- 1.RATION: 100V AC 1A MAX or 12V DC 2A MAX.
2. INSULATION RESISTANCE: 50M OHM MIN at 250V DC.
3. DIELECTRIC STRENGTH: 250 V AC / 1 MINUTE.
4. CONTACT RESISTANCE: 30M OHM MAX.
5. INSERTION FORCE: 4.5KG MAX.
6. WITHDRAWAL FORCE: 0.9KG ~ 3KG.



**RoHS Compliant**

TOLERANCES ARE

**MORETHANALL**  
PCB CONNECTORS  
Cable ASSEMBLIES

DRAWING BY CY

CHECKED BY GENIUS

UNIT / mm SCALE 1 : 1

DATE

SIZE A4

X. ±  
.X ±  
.XX ±  
.XXX ±  
ANG ±

P PROJECTION



**ORDER INFORMATION**

MDS-SPP-xx-LF  
SERIES | | | LEADFREE  
| | | 03~08WAY  
| | | PLASTIC  
| | | PANEL  
| | | SOCKET

DESCRIPTION: MINI DIN SOCKET PANEL MOUNT PLASTIC

煜倫股份有限公司

www.morethanall.com