

MATERIALS:

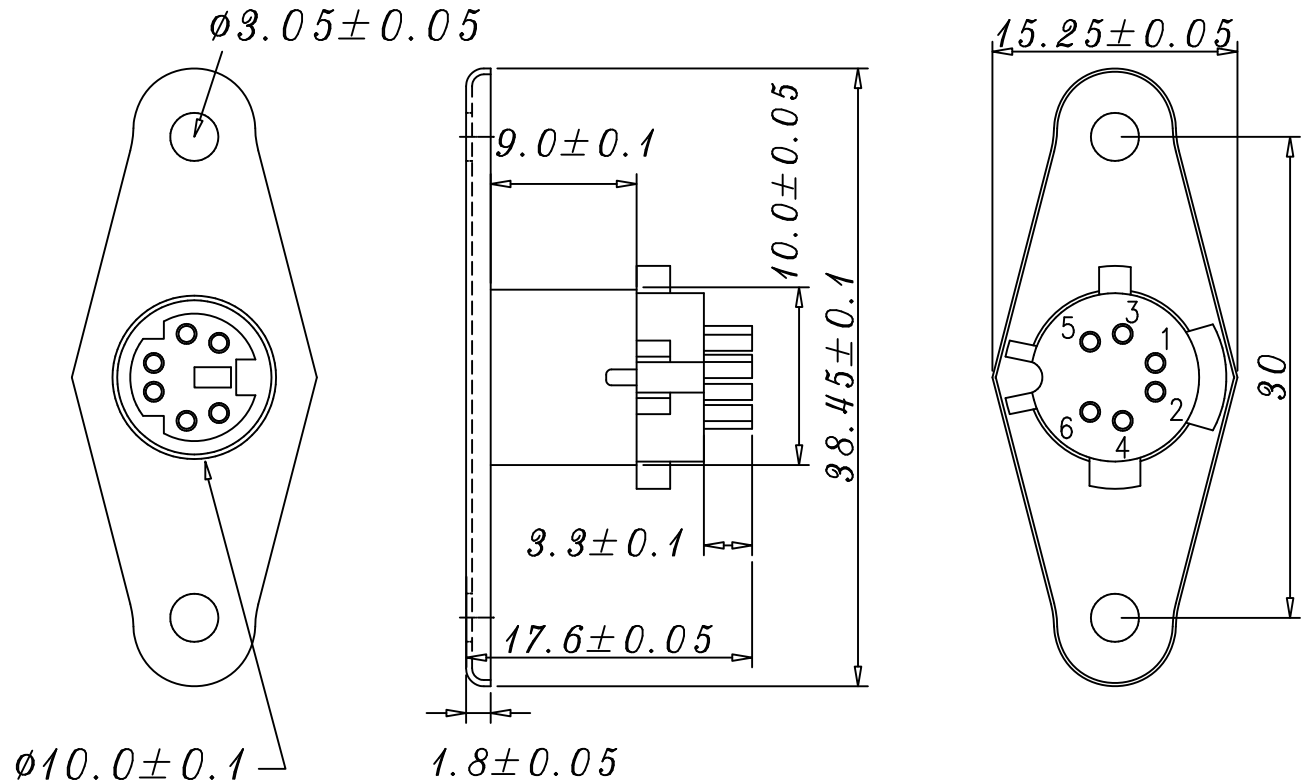
HOUSING: FIBER+NULON

METAL SHELL: BRASS/NICKEL PLATED

CONTACTS: PHOSPHOR BRANZESILVER PLATED

SPECIFICATIONS:

1. RATION: 100V AC 1A MAX or 12V DC 2A MAX.
2. INSULATION RESISTANCE: 50M OHM MIN at 250V DC.
3. DIELECTRIC STRENGTH: 250 V AC / 1 MINUTE.
4. CONTACT RESISTANCE: 30M OHM MAX.
5. INSERTION FORCE: 4.5KG MAX.
6. WITHDRAWAL FORCE: 0.9KG ~ 3KG.



RoHS Compliant

TOLERANCES ARE

MORETHANALL
PCB CONNECTORS
Cable ASSEMBLIES

DRAWING BY CY

CHECKED BY GENIUS

UNIT / mm SCALE 1:1

DATE

SIZE A4

X. ±
.X ±
.XX ±
.XXX ±
ANG ±

P PROJECTION



ORDER INFORMATION

MDS-SPL-xx-LF
SERIES | | | LEADFREE
| | | 03-08WAY
| | | LONG
| | | PANEL
| | | SOCKET

DESCRIPTION: MINI DIN SOCKET METAL PANEL MT

煜倫股份有限公司

www.morethanall.com