

RECOMMENDED P.C. BOARD PATTERN DIM.

Specifications

Electrical

Voltage Rating: 50VAC DC

Current Rating: 1.0A AC DC (AWG 28)

Contact Resistance: Initial value/20mΩmax

After environmental testing/40mΩmax

Insulation Resistance: 100MΩmin

Temperature Range: -25°C~+85°C

Withstanding voltage:500V AC/minute

Material and Finish

Insulator: Nylon 6T, UL94V-0

Color: Natural

Contact: Phosphor Bronze, Tin-Plated

Circuits	Dimension mm (in.)	
	A	B
20	9.0	13.1
30	14.0	18.1
40	19.0	23.1
50	24.0	28.1

RoHS Compliant

TOLERANCES ARE

MORETHANALL
PCB CONNECTORS
Cable ASSEMBLIES

煜倫股份有限公司

www.morethanall.com

DRAWING BY CY

CHECKED BY GENIUS

UNIT/ mm

SCALE 1:1

DATE

SIZE A4

PJECTION

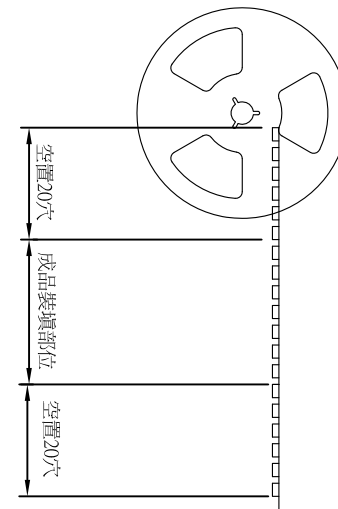
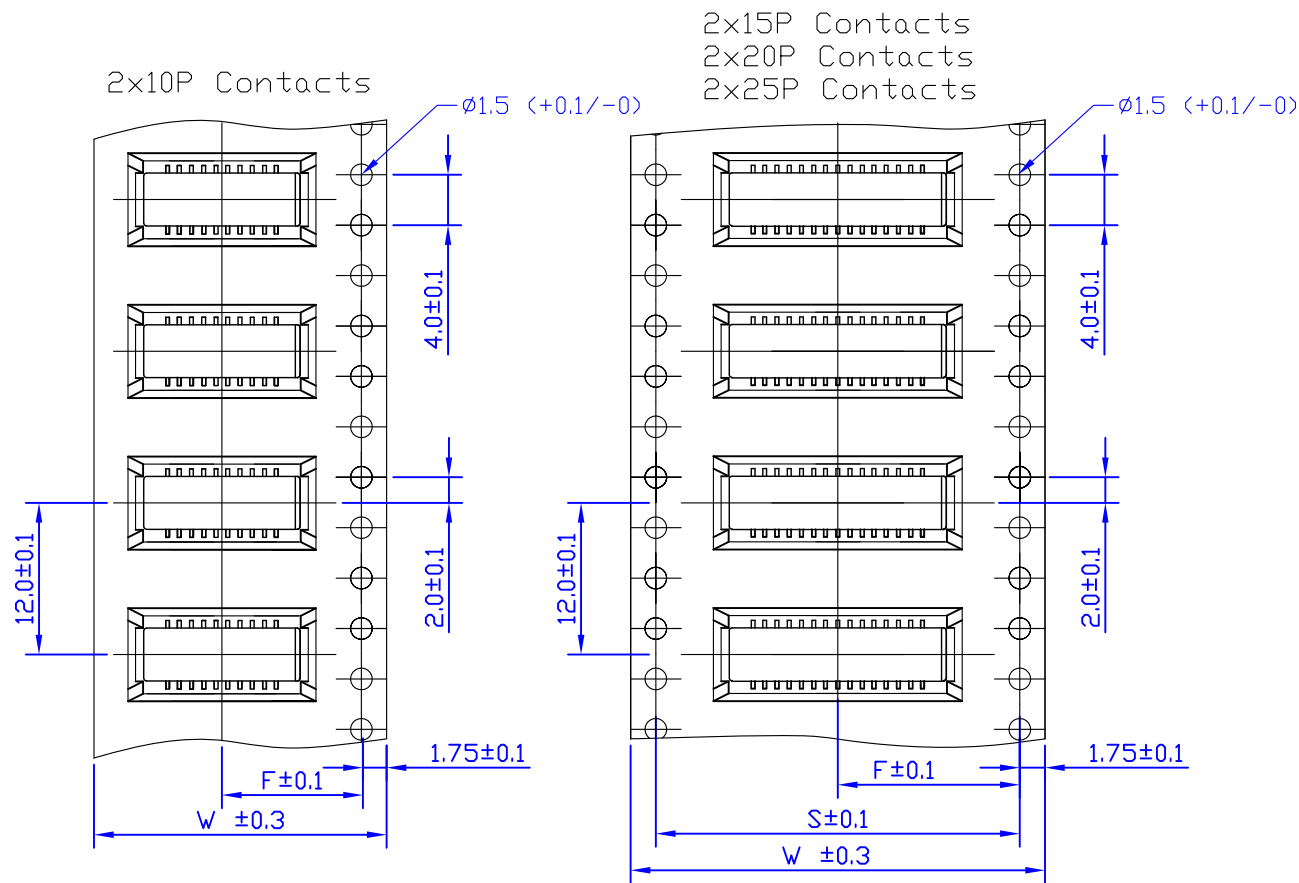
X, ±
.X ± 0.30
.XX ± 0.20
.XXX ±
ANG ±



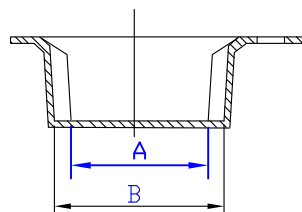
ORDER INFORMATION

SHD-WXTR-xx-LF
SERIES | | | | LEADFREE
20~50WAY
REEL
TIN /PLATED
NON POST
90°SMT

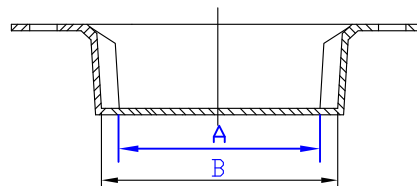
DESCRIPTION: SHD1.0mm Wire to Board Wafer SMT 90°(雙排)



P=Poles	W	F	S	Q'TY/Reel
2x10P	24	11.5		1000PCS
2x15P	32	14.2	28.4	1000PCS
2x20P	44	20.2	40.4	1000PCS
2x25P	44	20.2	40.4	1000PCS



A=B-2.50mm
B=(P/2)+3.45mm



A=B-2.50mm
B=(P/2)+3.45mm

RoHS Compliant

TOLERANCES ARE

MORETHANALL
PCB CONNECTORS
Cable ASSEMBLIES

DRAWING BY CY

CHECKED BY GENIUS

UNIT/mm

SCALE 1:1

DATE

SIZE A4

X, ±
.X ± 0.30
.XX ± 0.20
.XXX ±
ANG ±

PJECTION



ORDER INFORMATION

SHD-WXTR-xx-LF
SERIES | | | LEADFREE
20-50WAY
REEL
TIN / PLATED
NON POST
90°SMT

煜倫股份有限公司

www.morethanall.com

DESCRIPTION: 1.0mm Wire-to-Board Header SMT 90° Type Tape&Reel (Double Row)