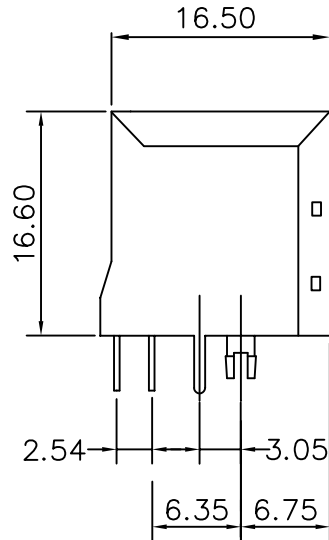
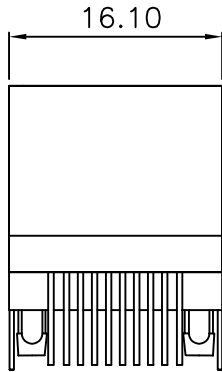


PCB LAYOUT/TOP VIEW



**SPECIFICATIONS**

**MATERIAL:**

1. Housing : PBT Polyester UL94V0
2. Color : Black
3. Contacts : 0.35mm Thickness Alloy Selective Gold Plating
4. Shield : 0.25mm Thickness Copper Alloy With Tin/Nickel Plated

**ELECTRICAL:**

1. Current Rating : 1.5 AMP MAX
2. Voltage Rating : 150 VAC MAX
3. Contact Resistance : 30 milliohms MAX, initial
4. Insulation Resistance : 500 Megohms MIN
5. Dielectric Withstanding Voltage : 1000 VAC, 1min

**RoHS Compliant**

TOLERANCES ARE

**MORETHANALL**  
PCB CONNECTORS  
Cable ASSEMBLIES

DRAWING BY CY

X.±

CHECKED BY GENIUS

.X±

UNIT / mm

SCALE 1 : 1

.XX±

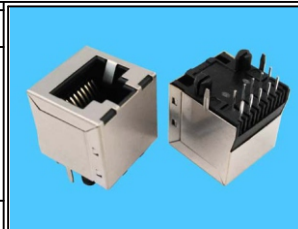
DATE

.XXX±

ANG±

SIZE A4

PJECTION



**ORDER INFORMATION**

**MJDF16-KXxxB3-1010-LF**

SERIES	10P10C	LEADFREE
	REAR TAB 3.05mm	
	06:06u" GOLD	
BLACK	15:15u" GOLD	
NON EAR	30:30u" GOLD	
	50:50u" GOLD	

**煜倫股份有限公司**

[www.morethanall.com](http://www.morethanall.com)

DESCRIPTION: Top Entry Shielded Modular Jack 180°