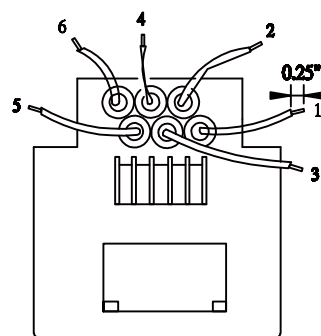
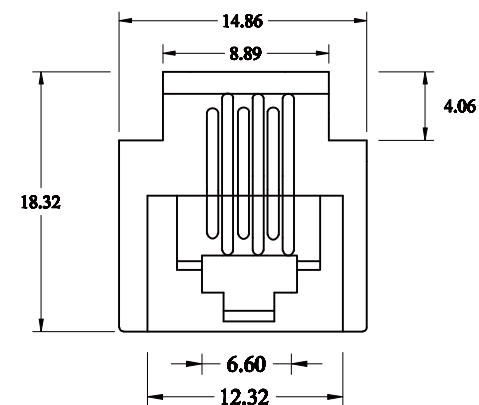
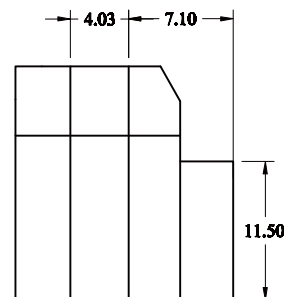


6P4C



6P6C



Contact Position	WIRE COLOR	LEADWIRE LENGTH	TIN Terminal
1	BLUE	7"	0.25"
2	YELLOW	7"	0.25"
3	GREEN	7"	0.25"
4	RED	7"	0.25"
5	BLACK	7"	0.25"
6	WHITE	7"	0.25"

MATERIAL:

1.HOUSING:A. ABS UL 94V2.

2.WIRE:A. UL1061 26 AWG.

B. STRANDED 7/0.16

3.CONDUCTOR:A.NICKEL THICKNESS 100-135U"

B. COLD THICKNESS 2.5-3.2U"

RoHS Compliant

TOLERANCES ARE

MORETHANALL
PCB CONNECTORS
Cable ASSEMBLIES

煜倫股份有限公司

www.morethanall.com

DRAWING BY CY

CHECKED BY GENIUS

UNIT/ mm

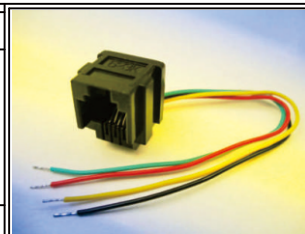
SCALE 1:1

DATE

SIZE A4

P PROJECTION

X. ±
.X ±
.XX ±
.XXX ±
ANG ±



ORDER INFORMATION

MJ623K-06xx26-xxx-LF

SERIES

0602:6P2C
0604:6P4C
0606:6P6C

LEADFREE

080:LENGTH 80mm
100:LENGTH 100mm
07N:LENGTH 7 INCH

26 AWG

DESCRIPTION: 623K