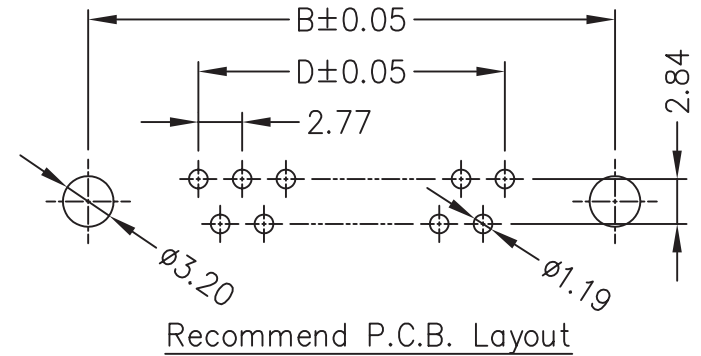
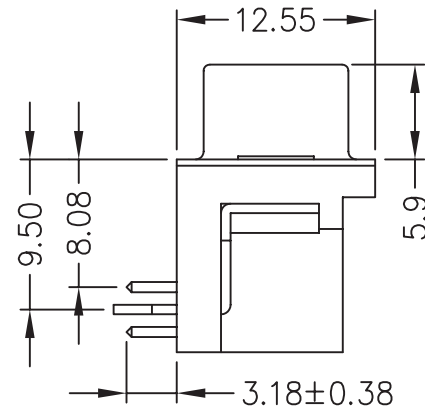
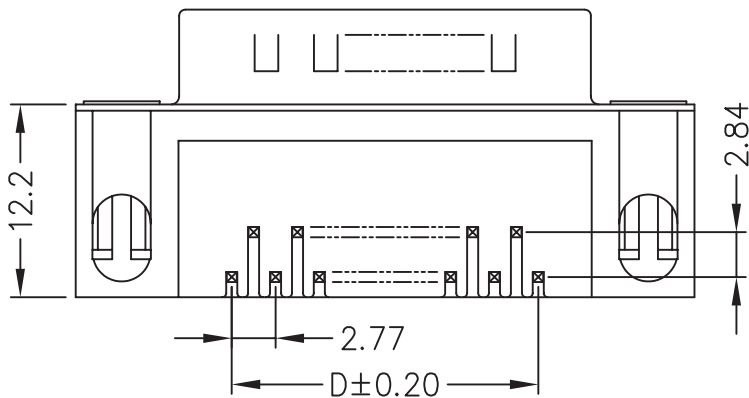


Material:

1. Insulator: PBT+30% Glass Fiber(Meet UL94V-0).
2. Contact: Copper Alloy.
3. Contact Plated: Selective (full) Gold over Nickel Plated.
4. Shell: Steel with Nickel or Tin or Zinc Plated.

Specification:

1. Current Rating: 5 Amps.
2. Withstanding Voltage: AC 500V for 1 Minute.
3. Insulation Resistance: 1000MΩ Min. at DC 500V.
4. Contact Resistance: 15mΩ Max..
5. Operating Temperature: -40°C~+105°C.



No. of Contacts	Dim. A	Dim. B	Dim. C	Dim. D
DR-PxN-09	16.92	24.99	30.81	11.08
DR-PxN-15	25.25	33.32	39.14	19.39
DR-PxN-25	38.96	47.04	53.04	33.24
DR-PxN-37	55.42	63.50	69.32	49.86

RoHS Compliant

TOLERANCES ARE



煜倫股份有限公司

www.morethanall.com

DRAWING BY CY

CHECKED BY GENIUS

UNIT/mm

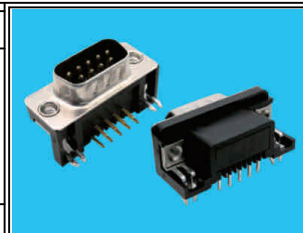
SCALE 1:1

DATE

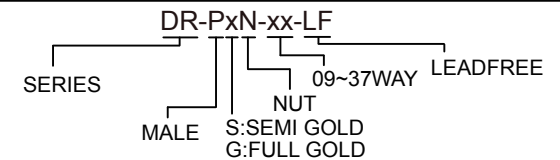
SIZE A4

PPOJECTION

X. ±
.X ± 0.30
.XX ± 0.15
.XXX ±
ANG ±



ORDER INFORMATION



DESCRIPTION: D-SUB RIGHT ANGLE MALE CONNECTOR 8.08mm WITH RIVET TYPE