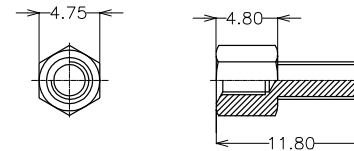


PCB LAYOUT
TOP VIEW TOLARANCE:±0.05



NOTES:

1.MATERIALS:

INSULATOR: GLASS FIBER REINFORCED THERMOPLASTIC LCP UL94V-0.
CONTACT: PHOSPHOR BRONZE, GOLD FLASH ON CONTACT, TIN PLATED ON TAIL 100µ", OVER NICKEL PLATED 50µ".
SHELL: STEEL, NICKEL PLATED.
BOARDLOCK: BRASS, TIN PLATED.
RIVET: BRASS, NICKEL PLATED.

2.ELECTRICAL:

INSULATION RESISTANCE: 1000 MEGOHMS MINIMUM
DIELECTRIC WITHSTANDING VOLTAGE: 500V AC
VOLTAGE RATING: 40 VOLTS AC(RMS) MAXIMUM
CURRENT RATING: 3.0 AMPS PER CIRCUIT
CONTACT RESISTANCE: 20 MILLIOHMS MAXIMUM

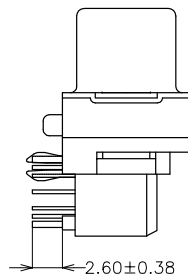
3.MECHANICAL PERFORMANCE:

MATING FORCES: 4.5kgf MAXIMUM
UNMATING FORCES: 1kgf MINIMUM, 4kgf MAXIMUM
DURABILITY: 100 CYCLES MINIMUM

4.ENVIRONMENTAL:

TEMPERATURE RANGE: -20°C TO +85°C

"*"標示是重點管控尺寸



RoHS Compliant

TOLERANCES ARE

MORETHANALL
PCB CONNECTORS
Cable ASSEMBLIES

煜倫股份有限公司

www.morethanall.com

DRAWING BY CY

CHECKED BY GENIUS

UNIT/mm

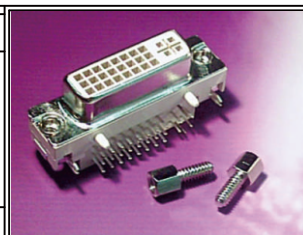
SCALE 1:1

DATE

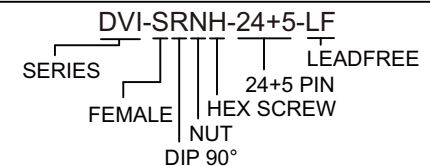
SIZE A4

PJECTION

X, ±
.X ± 0.38
.XX ± 0.25
.XXX ±
ANG ± 2°



ORDER INFORMATION



DESCRIPTION: DVI24+5母BC 半金貝吉色 無后鐵殼 附螺絲