

Note:

1.Material:

- 1.1 Insulator: P.B.T UL 94-V0 rated.
- 1.2 Contact: Copper alloy,t=0.20mm.
- 1.3 Shell: Cold rolled steel,t=0.40mm.

2.Specification:

- 2.1 Current rating: 1 A Max.
- 2.2 Dielectric withstanding voltage: 500 V(ac) for 1 minute.
- 2.3 Contact resistance: 30 mΩ Max.
- 2.4 Insulation resistance: 1000 MΩ Min at DC 500V.
- 2.5 Total mating force: 8.0 Kgf Max.
- 2.6 Total unmating force: 1.5 Kgf Min.
- 2.7 Temperature range: -55°C~+105°C

PART NO	A±0.25	B±0.20	C±0.20	D±0.20	E±0.30	F±0.25	G±0.25	H±0.05	I±0.10
DE-PS-09	30.81	24.99	16.92	8.38	15.30		12.55	2.77	2.84
DE-PS-15	39.25	33.32	25.25	8.38	15.30		12.55	2.77	2.84
DE-PS-25	53.04	47.04	38.96	8.38	15.30		12.55	2.77	2.84
DE-PS-37	69.50	63.50	55.42	8.38	15.30		12.55	2.77	2.84

4	Back-shell	1	Cold Rolled Steel	T=040mm	Tin Plated
3	Front-shell	1	Cold Rolled Steel	T=0.40mm	Nickel Plated
2	Contact	9~37	Copper alloy	T=0.20mm	Gold Plated
1	Housing	2	P.B.T	UL 94-V0	Black/Blue/White
No.	Part Name	Qty	Material	Remarks & Thickness	Finish

RoHS Compliant

TOLERANCES ARE

MORETHANALL
PCB CONNECTORS
Cable ASSEMBLIES

DRAWING BY CY

CHECKED BY GENIUS

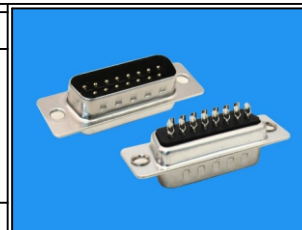
UNIT / mm SCALE 1 : 1

DATE

SIZE A4

X, ±
.X ± 0.30
.XX ± 0.20
.XXX ± 0.10
ANG ± 1°

PJECTION



ORDER INFORMATION

DE-PS-xx-LF
SERIES | LEADFREE
| 09~37 WAY
| SOLDER
MALE

煜倫股份有限公司

www.morethanall.com

DESCRIPTION: D-SUB SOLDER (M) 傳統