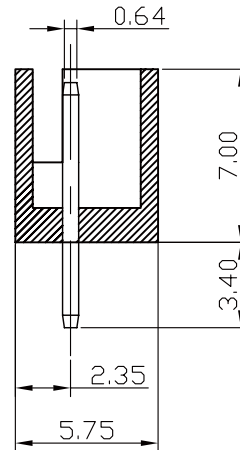
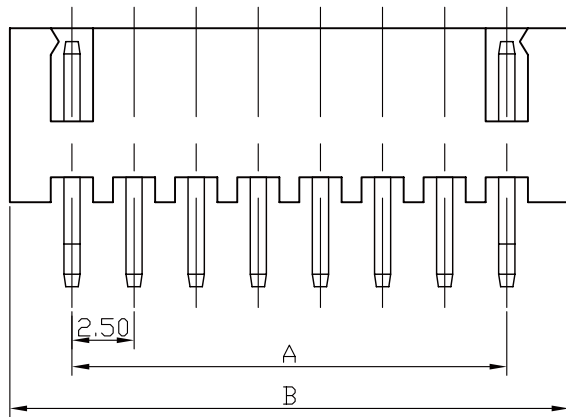


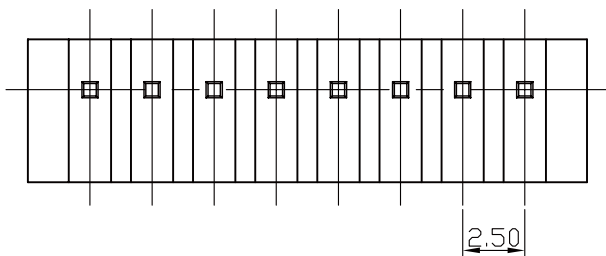
RECOMMENDED P.C.BOARD HOLE DIMM.

Specifications

Current Rating: 3A AC, DC
 Voltage Rating: 250V AC Maximum
 Operating Temp: -25°C ~ +85°C
 Contact Resistance: 10 mΩ Max
 Insulation Resistance: 1000MΩ Min
 Terminal Material: Brass/Tin-plated
 Material: Nylon 66, UL94V-0



Poles	Dimension mm (in.)		Part No.	Note.
	A	B		
2	2.50 (0.098)	7.50 (0.295)	XH-D-02	
3	5.00 (0.197)	10.00 (0.394)	XH-D-03	
4	7.50 (0.295)	12.50 (0.492)	XH-D-04	
5	10.00 (0.394)	15.00 (0.591)	XH-D-05	
6	12.50 (0.492)	17.50 (0.689)	XH-D-06	
7	15.00 (0.591)	20.00 (0.787)	XH-D-07	
8	17.50 (0.689)	22.50 (0.886)	XH-D-08	
9	20.00 (0.787)	25.00 (0.984)	XH-D-09	
10	22.50 (0.886)	27.50 (1.082)	XH-D-10	
11	25.00 (0.984)	30.00 (1.181)	XH-D-11	
12	27.50 (1.082)	32.50 (1.280)	XH-D-12	
13	30.00 (1.181)	35.00 (1.378)	XH-D-13	
14	32.50 (1.280)	37.50 (1.476)	XH-D-14	
15	35.00 (1.378)	40.00 (1.575)	XH-D-15	
16	37.50 (1.476)	42.50 (1.673)	XH-D-16	
17	40.00 (1.575)	45.00 (1.772)	XH-D-17	
18	42.50 (1.673)	47.50 (1.870)	XH-D-18	
19	45.00 (1.772)	50.00 (1.969)	XH-D-19	
20	47.50 (1.870)	52.50 (2.067)	XH-D-20	



RoHS Compliant

TOLERANCES ARE

MORETHANALL
 PCB CONNECTORS
 Cable ASSEMBLIES

DRAWING BY CY

CHECKED BY GENIUS

UNIT / mm

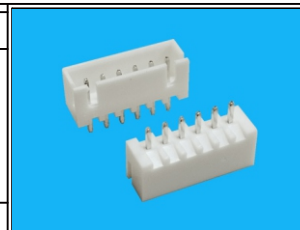
SCALE 1 : 1

DATE

SIZE A4

PJECTION

X, ±
 .X ± 0.30
 .XX ± 0.20
 .XXX ± 0.10
 ANG ±



ORDER INFORMATION

XH-D-xx-LF
 SERIES | LEADFREE
 02~20WAY
 DIP 180°

煜倫股份有限公司

www.morethanall.com

DESCRIPTION: