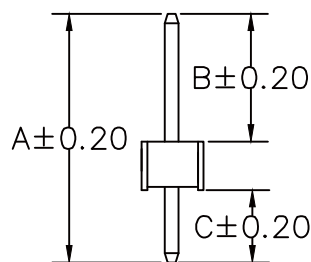
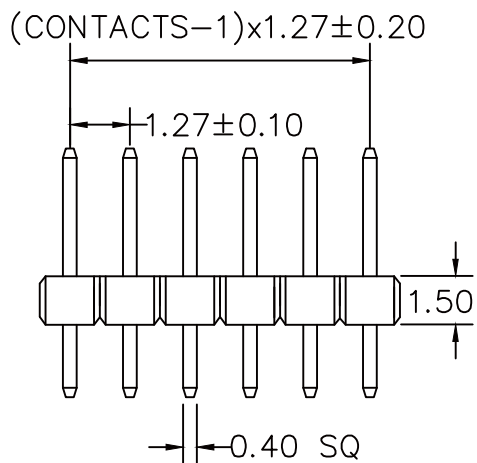


### RECOMMENDED P.C.B LAYOUT



A: 6.70 mm B: 2.60 mm C: 2.60 mm

**MATERIAL**  
HOUSING : THERMOPLASTIC UL94V-0  
CONTACT : COPPER ALLOYS

**SPECIFICATION**  
CURRENT: 1A  
OPERATING TEMPERATURE: -55°C TO +105°C  
CONTACT RESISTANCE : 20 MILLIOHMS MAX  
INSULATION RESISTANCE : 5000 MEGAOHMS MIN  
DIELECTRIC STRENGTH : 1000 VAC MIN

CONTACTS	1X26
1X2	1X27
1X3	1X28
1X4	1X29
1X5	1X30
1X6	1X31
1X7	1X32
1X8	1X33
1X9	1X34
1X10	1X35
1X11	1X36
1X12	1X37
1X13	1X38
1X14	1X39
1X15	1X40
1X16	1X41
1X17	1X42
1X18	1X43
1X19	1X44
1X20	1X45
1X21	1X46
1X22	1X47
1X23	1X48
1X24	1X49
1X25	1X50

**RoHS Compliant**

TOLERANCES ARE

**MORETHANALL**  
PCB CONNECTORS  
Cable ASSEMBLIES

DRAWING BY CY

CHECKED BY GENIUS

UNIT / mm

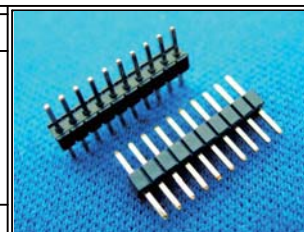
SCALE 1:1

DATE

SIZE A4

PPOJECTION

X. ±  
.X ± 0.38  
.XX ± 0.25  
.XXX ±  
ANG ± 5°



**ORDER INFORMATION**

PA-D152626-1Xxx-LF  
SERIES | LEADFREE  
DIP 180° | CONTACT 2.6mm  
1X02:02 WAY  
1X50:50 WAY  
DIP 2.6mm  
BASE 1.5mm

DESCRIPTION: PIN HEADER 1.27\*1.27mm STRAIGHT TYPE, SINGLE ROW

煜倫股份有限公司

www.morethanall.com