

Specifications:

Current Rating: 1.0A AC/DC

Voltage Rating: 30V AC/DC

Contact Resistance: 20m ohm. Max.

Insulation Resistance: 1,000M ohm. Min.

Withstanding Voltage: 500V AC For One Minute

Operating Temperature Range: $-40^{\circ}\text{C} \sim +105^{\circ}\text{C}$

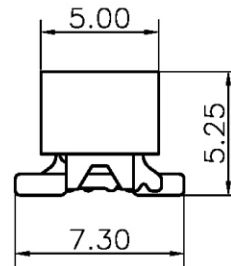
Material and Finish

Insulator: High Temp. Plastic (UL94V-0)

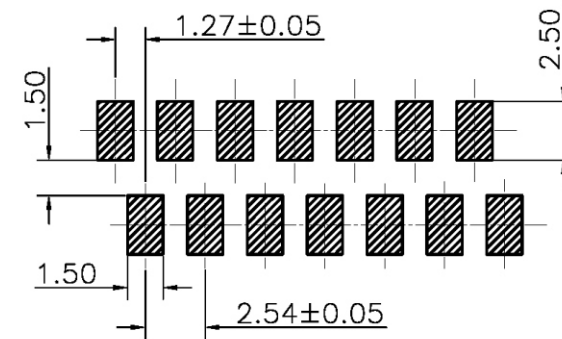
Contact: Copper Alloy

Plated: Tin Plated

How to Order



Pos	A	B	C	Pos	A	B	C
4	9.70	3.81	5.60	16	24.94	19.05	20.84
6	12.24	6.35	8.14	18	27.48	21.59	23.38
8	14.78	8.89	10.68	20	30.02	24.13	25.92
10	17.32	11.43	13.22	22	32.56	26.67	28.46
12	19.86	13.97	15.76	24	35.10	29.21	31.00
14	22.40	16.51	18.30	26	37.64	31.75	33.54



PCB Layout

RoHS Compliant

TOLERANCES ARE



煜倫股份有限公司

www.morethanall.com

DRAWING BY CY

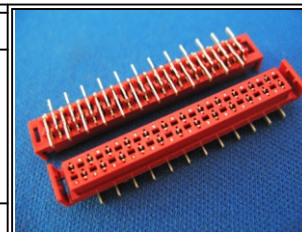
CHECKED BY GENIUS

UNIT / mm SCALE 1 : 1

DATE

SIZE A4 PPROJECTION

X. \pm
 .X \pm
 .XX \pm
 .XXX \pm
 ANG \pm



ORDER INFORMATION

MIM-SVL-xx-LF
 SERIES | | | LEADFREE
 | | | 04~26WAY
 | | | LATCH
 | | | 180°SMT
 | | | FEMALE

DESCRIPTION: