

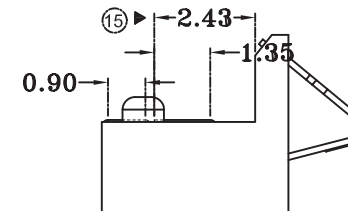
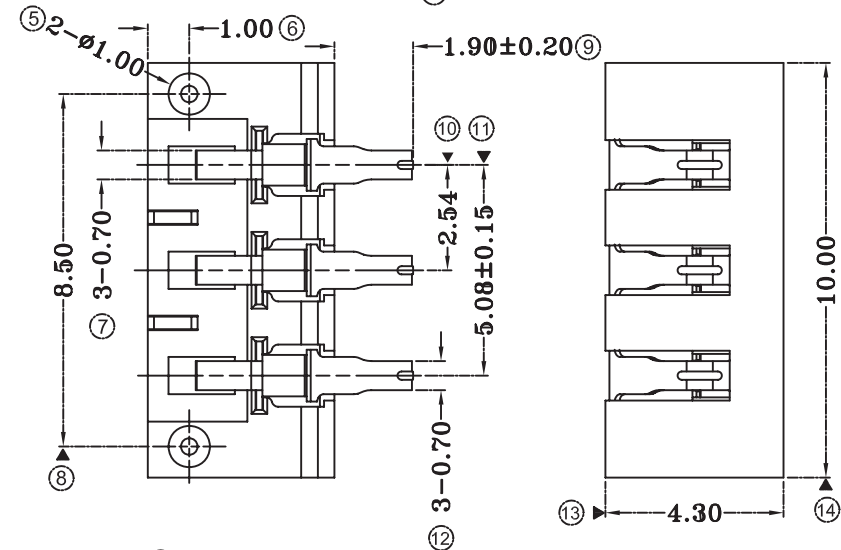
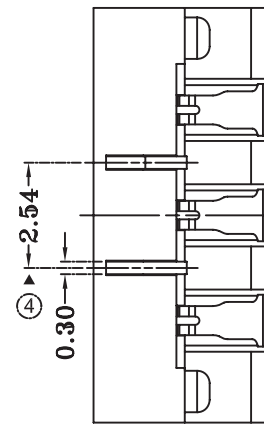
NOTE:

1.MATERIALS:

- a.HOUSING:LCP+30%GF UL94 V-0
- b.TERMINAL COPPER ALLOY THICKNESS=0.15mm
- c.RETENTION PAD:BRASS,T=0.30mm

2.ELECTRICAL

- a.CURRENT RATING:0.5A 50V AC/DC.
- b.CONTACT RESISTANCE:60mΩ MAX AT DC 20mA.
- c.INSULATION RESISTANCE:500MΩ MIN AT 500V DC.
- d.DIELECTRIC WITHSTANDING VOITAGE:500V AC FOR 1 MINUTE.
- e.OPERATING TEMPERATURE RANGE:-25℃TO +85℃.



RoHS Compliant

TOLERANCES ARE

MORETHANALL
PCB CONNECTORS
Cable ASSEMBLIES

煜倫股份有限公司

www.morethanall.com

DRAWING BY CY

CHECKED BY GENIUS

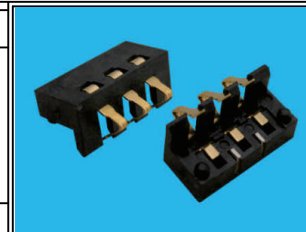
UNIT/mm SCALE 1:1

DATE

SIZE A4

X ±
.X ± 0.25
.XX ± 0.15
.XXX ±
ANG ±

PPOJECTION



ORDER INFORMATION

BCS26-W22EP2-03-LF

SERIES | | | LEADFREE
90°SMT | | | 03WAY
POST
EAR
HIGH 2.2mm

DESCRIPTION: 3P BATTERY SMT 樣式 (2.54 PH,4.3H)