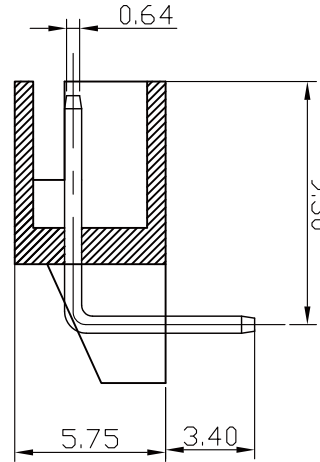
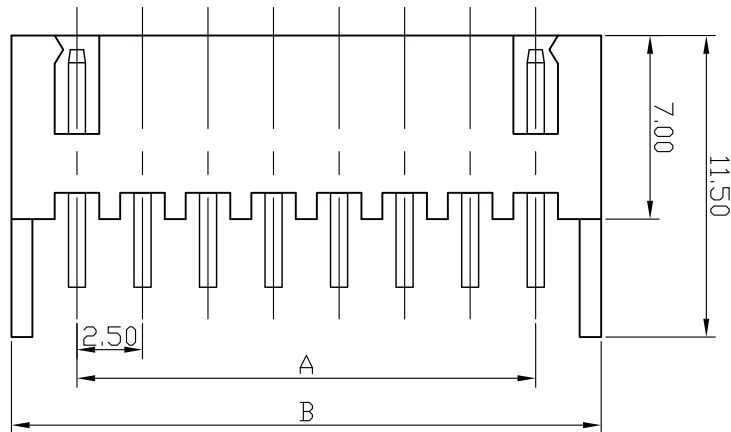


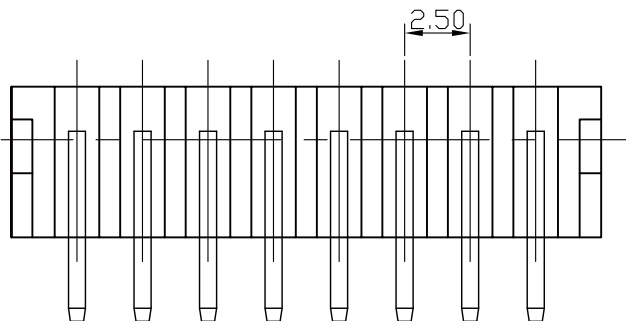
RECOMMENDED P.C.BOARD HOLE DIMM.

### Specifications

Current Rating: 3A AC, DC  
 Voltage Rating: 250V AC Maximum  
 Operating Temp: -25°C ~ +85°C  
 Contact Resistance: 10mΩ Max  
 Insulation Resistance: 1000MΩ Min  
 Terminal Material: Brass/Tin-plated  
 Material: Nylon 66, UL94V-0+GF



Poles	Dimension mm (in.)		Part No.	Note.
	A	B		
2	2.50 (0.098)	7.50 (0.295)	XH-Rxx-02	
3	5.00 (0.197)	10.00 (0.394)	XH-Rxx-03	
4	7.50 (0.295)	12.50 (0.492)	XH-Rxx-04	
5	10.00 (0.394)	15.00 (0.591)	XH-Rxx-05	
6	12.50 (0.492)	17.50 (0.689)	XH-Rxx-06	
7	15.00 (0.591)	20.00 (0.787)	XH-Rxx-07	
8	17.50 (0.689)	22.50 (0.886)	XH-Rxx-08	
9	20.00 (0.787)	25.00 (0.984)	XH-Rxx-09	
10	22.50 (0.886)	27.50 (1.082)	XH-Rxx-10	
11	25.00 (0.984)	30.00 (1.181)	XH-Rxx-11	
12	27.50 (1.082)	32.50 (1.280)	XH-Rxx-12	



**RoHS Compliant**

TOLERANCES ARE

**MORETHANALL**  
 PCB CONNECTORS  
 Cable ASSEMBLIES

煜倫股份有限公司

www.morethanall.com

DRAWING BY CY

CHECKED BY GENIUS

UNIT/mm

SCALE 1:1

DATE

SIZE A4

PJECTION

X. ±  
 .X ±  
 .XX ±  
 .XXX ±  
 ANG ±



### ORDER INFORMATION

XH-Rxx-xx-LF  
 SERIES | LEADFREE  
 02~12WAY  
 RD:RED  
 BL:BLUE  
 BK:BLACK  
 GR:GREEN  
 DIP 90°

DESCRIPTION: 2.5mm Wire-to-Board Header DIP 90° Type