

Electrical Characteristics:

Current rating: 0.5A AC/DC
 Voltage rating: 50V AC/DC
 Temperature range: -55°C~+85°C
 Withstand Voltage: 200V AC/Minute
 Contact Resistance: ≤ 20mΩ
 Insulation resistance: ≥ 500 MΩ
 Relative Humidity: 93%+40°C

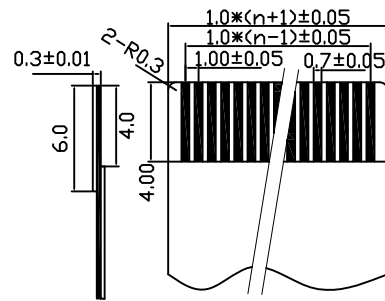
Material Description:

Terminal: Phosphor Bronze Tin-Leadplated

Fitting Nail: Brass Tin-plate

Housing: Thermoplastic(UL94V-0)

Slider: Thermoplastic(UL94V-0)

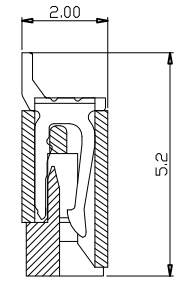
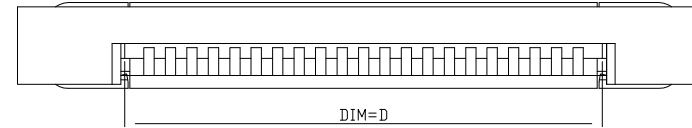
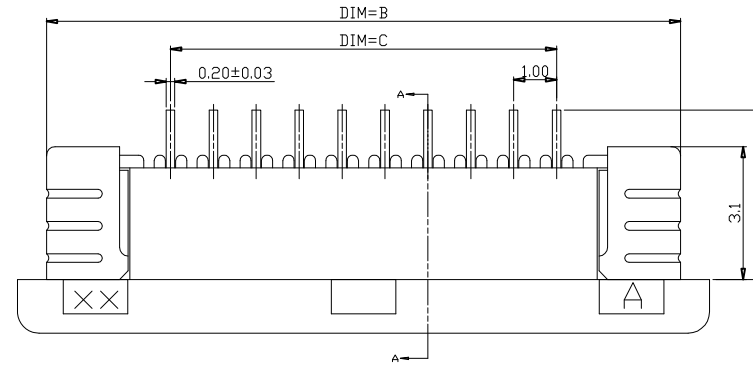
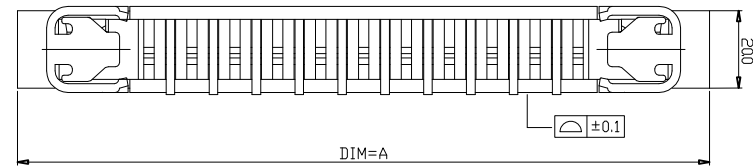


FFC CABLE

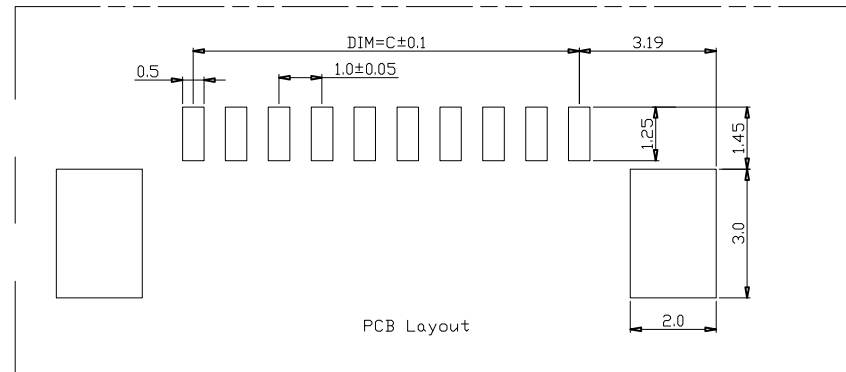
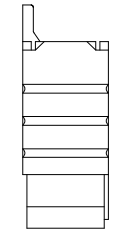
★ Have Produce Pin Number

POS.	A	B	C	D	E
★ 4	10.1	9.0	3.0	5.1	4.4
★ 5	11.1	10.0	4.0	6.1	
★ 6	12.1	11.0	5.0	7.1	
★ 7	13.1	12.0	6.0	8.1	
★ 8	14.1	13.0	7.0	9.1	
★ 9	15.1	14.0	8.0	10.1	
★ 10	16.1	15.0	9.0	11.1	
★ 11	17.1	16.0	10.0	12.1	
★ 12	18.1	17.0	11.0	13.1	
★ 13	19.1	18.0	12.0	14.1	
★ 14	20.1	19.0	13.0	15.1	
★ 15	21.1	20.0	14.0	16.1	
★ 16	22.1	21.0	15.0	17.1	
★ 17	23.1	22.0	16.0	18.1	
★ 18	24.1	23.0	17.0	19.1	
★ 19	25.1	24.0	18.0	20.1	
★ 20	26.1	25.0	19.0	21.1	
★ 21	27.1	26.0	20.0	22.1	
★ 22	28.1	27.0	21.0	23.1	

POS.	A	B	C	D	E
★ 23	29.1	28.0	22.0	24.1	4.9
★ 24	30.1	29.0	23.0	25.1	
★ 25	31.1	30.0	24.0	26.1	
★ 26	32.1	31.0	25.0	27.1	
★ 27	33.1	32.0	26.0	28.1	
★ 28	34.1	33.0	27.0	29.1	
★ 29	35.1	34.0	28.0	30.1	



SECTION A-A
上接触



PCB Layout

RoHS Compliant

TOLERANCES ARE



DRAWING BY CY

CHECKED BY GENIUS

UNIT / mm

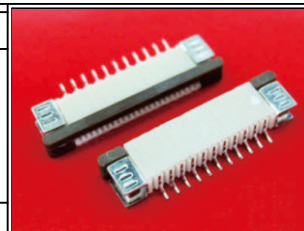
SCALE 1 : 1

DATE

SIZE A4

PJECTION

X, ±
 .X ± 0.15
 .XX ± 0.05
 .XXX ± 0.30
 ANG ±



ORDER INFORMATION

FPA-WZA201-xx-LF
 SERIES | | | LEADFREE
 | | | 04-24WAY
 | | | HIGH 2.0mm
 | | | UPPER CONTACT
 ZIF
 90°SMT

DESCRIPTION: FFC/FPC Connector ZIF Right Angle Upper Contact jump pin Type (Pitch 1.0 mm)

煜倫股份有限公司

www.morethanall.com