

RECOMMEND P.C.BOARD LAYOUT

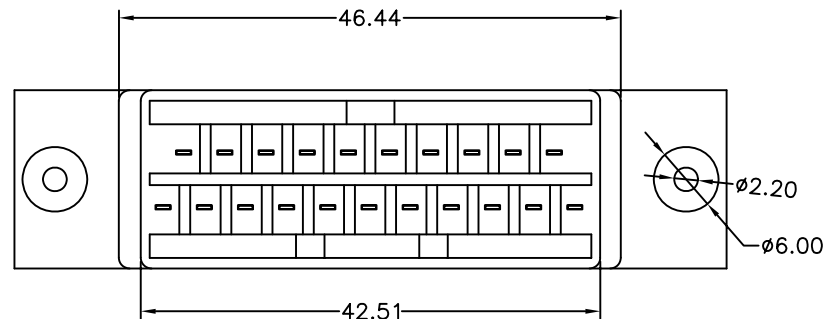
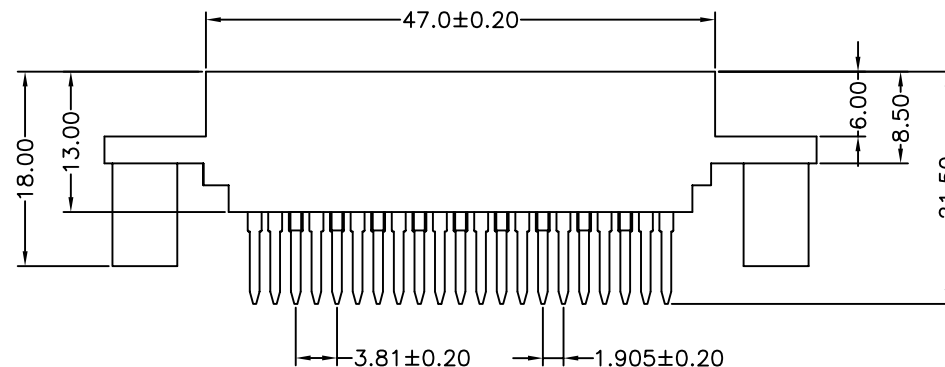
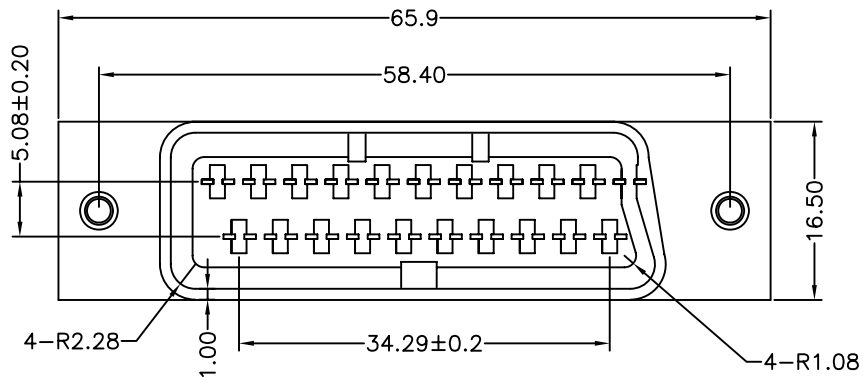
NOTES:

1. MATERIALS

- 1.1 Insulator:PC
- 1.2 Contact:Brass, 0.3T

2. SPECIFICATIONS

- 2.1 Current Rating: 3Amp
- 2.2 Dielectric Strength:1000V AC for one minute
- 2.3 Insulator Resistance:1000 M ohms Min
- 2.4 contact Resistance:30m ohms Max
- 2.5 Operation temperature:-55°C to +105°C
- 2.6 INSERTION FORCE:<5kg
- 2.7 EXTRACTION FORCE:>1.5kg



煜倫股份有限公司

www.morethanall.com

RoHS Compliant

DRAWING BY CY

CHECKED BY GENIUS

UNIT / mm

SCALE 1 : 1

DATE

SIZE A4

TOLERANCES ARE

X. ±

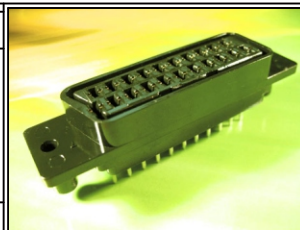
.X ±

.XX ±

.XXX ±

ANG ±

PJECTION



ORDER INFORMATION

SC-SDE-21-LF
 SERIES | LEADFREE
 | 21 WAY
 | EAR
 | DIP 180°
 | FEMALE

DESCRIPTION: 180度母座金 有耳 螺絲孔直徑2.2 PC 無毒