

MATERIAL

INSULATION: VINYL

MATERIAL: COPPER

TIN PLATING

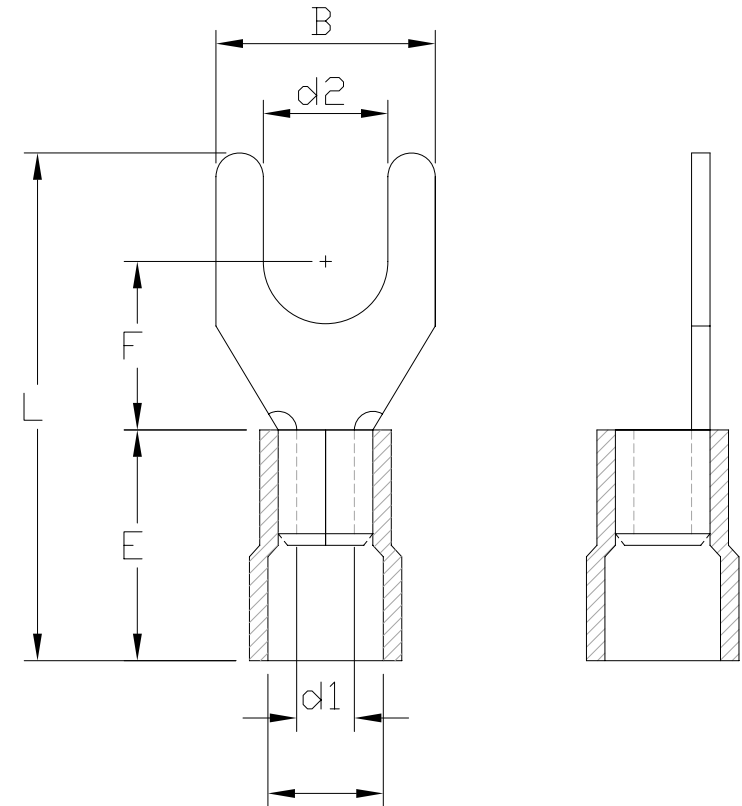
MAXIMUM ELECTRIC CURRENT

A. W. G	16	14
MAX AMP	18	30

NOTE:

1. MAXIMUM ELECTRICAL RATING: 105 °C 600 VOLTS
2. WIRE RANGE: 16-14 AWG / 1.5-2.5 mm²
INSULATED COLOR: BLUE
3. MATERIAL THICKNESS: t
TOLERANCE: ±0.05

WIRE RANGE AWG/mm ²	產品編號 ITEM NO.	d2 ±0.20	B ±0.20	F ±0.30	L ±1.00	E ±0.60	D ±0.30	d1 ±0.20	t
16-14 AWG 1.5-2.5 mm ²	YT-V32S-14	3.2	5.0	6.3	21.0	10.0	4.5	2.3	0.8
	YT-V32-14	3.2	5.8	6.3	21.0				
	YT-V37S-14	3.7	5.8	6.3	21.0				
	YT-V37M-14	3.7	6.4	6.3	21.0				
	YT-V37L-14	3.7	7.2	6.5	21.2				
	YT-V43S-14	4.3	6.4	6.3	21.0				
	YT-V43M-14	4.3	7.2	6.5	21.2				
	YT-V43L-14	4.3	8.5	7.3	22.0				
	YT-V53S-14	5.3	8.5	7.3	22.0				
	YT-V53L-14	5.3	9.5	7.3	22.0				
	YT-V65S-14	6.5	9.5	7.3	22.0				
	YT-V65L-14	6.5	12.0	11.0	27.2				
	YT-V84-14	8.4	12.0	11.0	27.2				



RoHS Compliant

TOLERANCES ARE

MORETHANALL
PCB CONNECTORS
Cable ASSEMBLIES

DRAWING BY CY

X. ±

CHECKED BY GENIUS

.X ±

UNIT / mm

SCALE 1:1

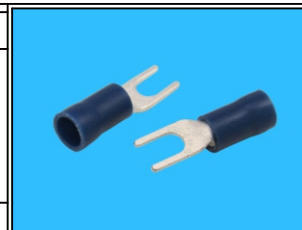
.XXX ±

DATE

ANG ±

SIZE A4

P PROJECTION



ORDER INFORMATION

YT-Vxxy-14-LF
SERIES | T | LEADFREE
14-16AWG
BLANK: STANDARD
S.M.L/ B WIDTH
32:d2 3.2mm
PVC

煜倫股份有限公司

www.morethanall.com

DESCRIPTION: