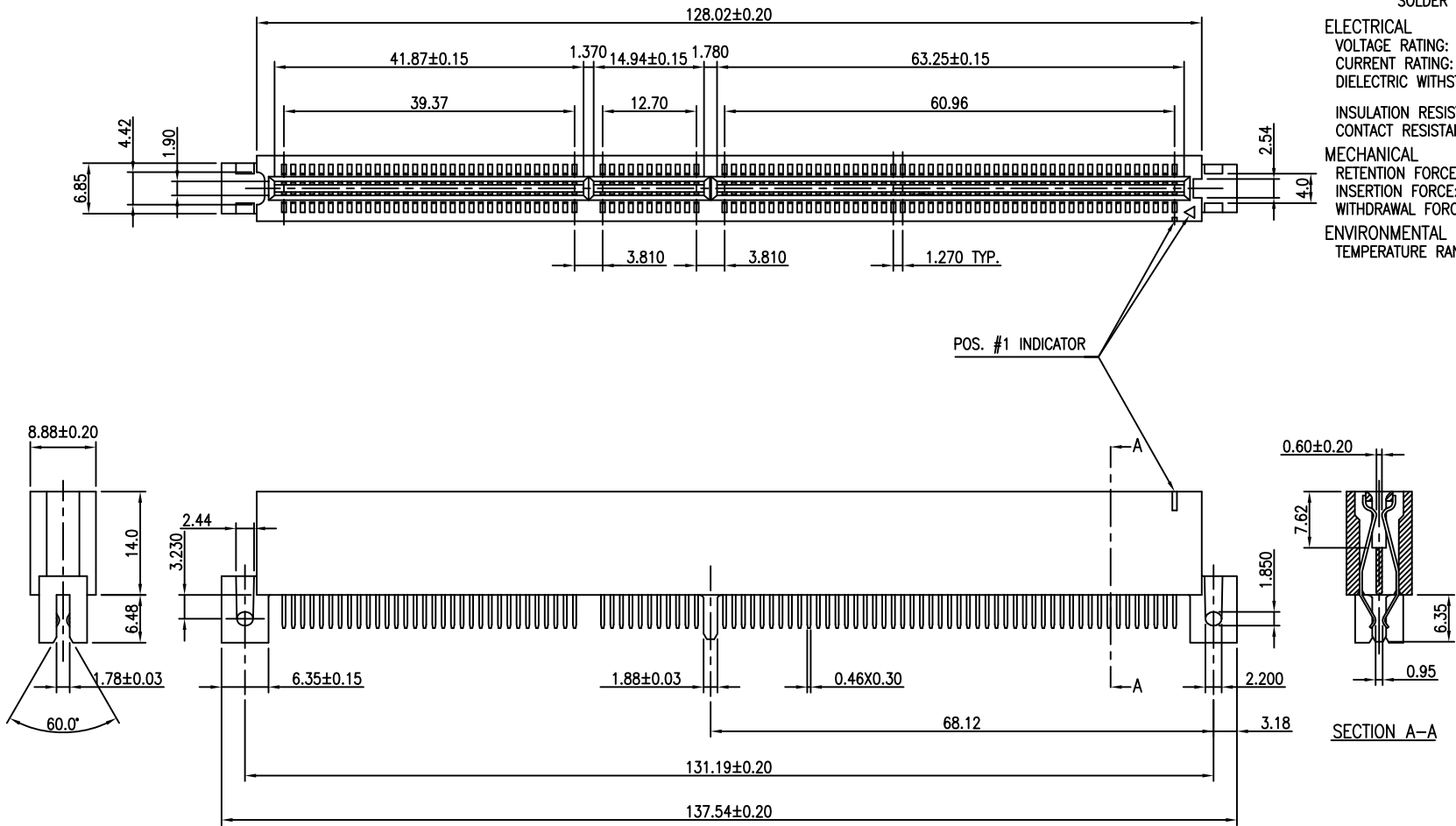


MATERIAL
 INSULATOR: GLASS-REINFORCED HIGH THERMOPLASTIC.
 PPS UL94V-0 RATED.
 CONTACT: COPPER ALLOY.
 PLATING: MATING AREA - SELECTED GOLD OVER NICKEL.
 SOLDER AREA - TIN OVER NICKEL.

ELECTRICAL
 VOLTAGE RATING: 250 VAC RMS.
 CURRENT RATING: 1 AMP.
 DIELECTRIC WITHSTANDING VOLTAGE: 500 VAC RMS 60Hz
 FOR 1 MINUTE.
 INSULATION RESISTANCE: 1000 MEGOHMS MIN AT 500 VDC.
 CONTACT RESISTANCE: 30 MILLIOHMS MAX.

MECHANICAL
 RETENTION FORCE: 460 GRAMS MIN PER CONTACT.
 INSERTION FORCE: 230 GRAMS MAX PER CONTACT PAIR.
 WITHDRAWAL FORCE: 15 GRAMS MIN PER CONTACT PAIR.

ENVIRONMENTAL
 TEMPERATURE RANGE: -55°C TO +85°C.

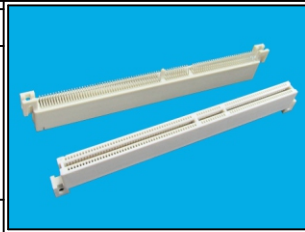


RoHS Compliant

TOLERANCES ARE

MORETHANALL
 PCB CONNECTORS
 Cable ASSEMBLIES

DRAWING BY CY X. ± 0.20
 CHECKED BY GENIUS .X ± 0.15
 .XX ± 0.10
 .XXX ± 0.05
 ANG ±



ORDER INFORMATION

PCI-EFPPS-184V5-LF
 SERIES | | | LEADFREE
 | | | 5.0V
 | | | 184 WAY
 PPS
 FLANGE
 EDGE CLIP

煜倫股份有限公司

www.morethanall.com

UNIT / mm SCALE 1 : 1
 DATE
 SIZE A4 PROJECTION

DESCRIPTION: 64 BIT PCI CARDEDGE SLOT, STR. MOUNT , 5.0V