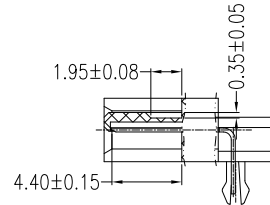


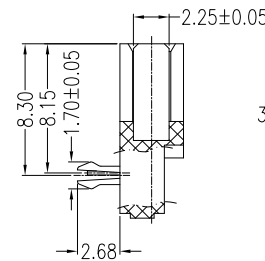
P.C.B. LAYOUT(T=1.60mm)  
COMPONENT SIDE

Signal Segment	
Name	Type
S1	GND
S2	A+
S3	A-
S4	GND
S5	B-
S6	B+
S7	GND

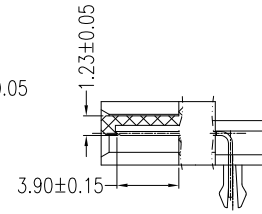
Power Segment	
Name	Type
P1	V3.3
P2	V3.3
P3	V3.3
P4	GND
P5	GND
P6	GND
P7	V5
P8	V5
P9	V5
P10	GND
P11	DAS/DSS
P12	GND
P13	V12
P14	V12
P15	V12



SECT B-B



SECT F-F



SECT C-C

**NOTES:**

**\*Material**

Housing: LCP UL 94V-0 rated, Color: Black;  
 Contact: Brass;  
 Plating: Au Plating on contact area  
 Sn(100u"Min) plating on solder Tail.  
 Ni(50u"Min) underplating overall.  
 Harpoon: Brass;  
 Plating: Sn(100u"Min) plating on solder Tail.  
 Ni(50u"Min) underplating overall.

**\*Mechanical**

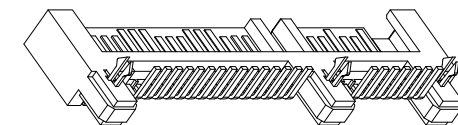
Insertion Force: 45N max.  
 Withdrawal Force: 10N min.  
 Durability: 500 cycles

**\*Electrical Specification**

Current Rating: 1.5 Ampere per contact;  
 Contact Resistance: 30 mΩ max.  
 Insulation Resistance: 1000 MΩ min.  
 Dielectric Withstanding Voltage: 500V AC.

**\*Environmental**

Operating Temperature: -55°C to +85°C.



**RoHS Compliant**

TOLERANCES ARE

**MORETHANALL**  
PCB CONNECTORS  
Cable ASSEMBLIES

煜倫股份有限公司

www.morethanall.com

DRAWING BY CY

CHECKED BY GENIUS

UNIT / mm

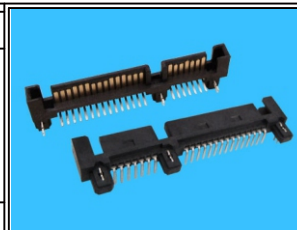
SCALE 1 : 1

DATE

SIZE A4

PPOJECTION

X, ±  
 .X ± 0.35  
 .XX ± 0.25  
 .XXX ± 0.15  
 ANG ± 3°



**ORDER INFORMATION**

SATA-PRA40Z-15+7-LF  
 SERIES | | | | LEADFREE  
 | | | | 15+7 WAY  
 | | | | CLIP  
 | | | | HIGH 4.0mm  
 MALE | | | | UPPER CONTACT  
 DIP 90°

DESCRIPTION: Serial ATA 15+7 P 90° DIP Type Male