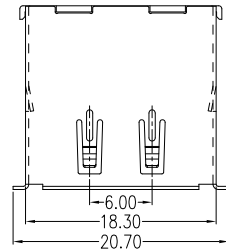


HDMI Pin's Define			
Pin	Signal Assignment	Pin	Signal Assignment
1	TMDS Date2+	2	TMDS Date2 Shield
3	TMDS Date2-	4	TMDS Date1+
5	TMDS Date1 Shield	6	TMDS Date1-
7	TMDS Date0+	8	TMDS Date0 Shield
9	TMDS Date0-	10	TMDS Clock-
11	TMDS Clock Shield	12	TMDS Clock+
13	CEC	14	Reserved(N.C.on device)
15	SCL	16	SDA
17	DDC/CEC Ground	18	+5V Power
19	Hot Plug Detect		

USB Pin's Define	
Pin Number	Signal Name
S1	VBUS
S2	D-
S3	D+
S4	GDN



Unit:mm

Standard	Dim A
UBHDMI-FR-4A19	2.15~2.30
UBHDMI-FRD3-4A19	3.10

NOTES:

Material

Housing : PBT, UL 94-0 Rated
 Retainer : Nylon66, UL 94-0 Rated
 Contact(HDMI) : Phosphor Bronze,Gold plating over Nickel on contact area; Tin Plating on Solder Tail.
 Contact(USB): Phosphor Bronze,Gold plating over Nickel on contact area; Tin Plating on Solder Tail.
 Shell(Inside): SUS304
 Shell(Outside) : SPCC, Tin Planting over Nickel.

*HDMI Electrical Specification

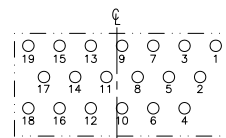
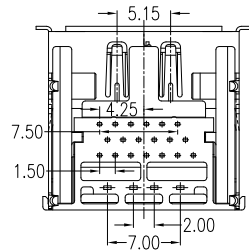
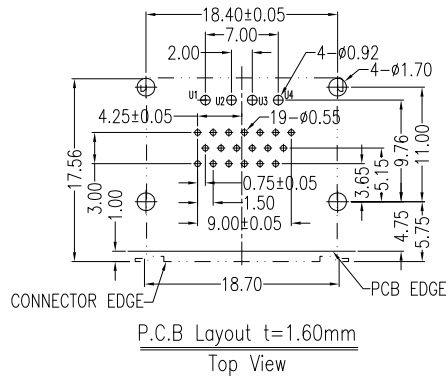
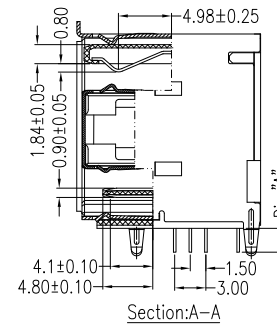
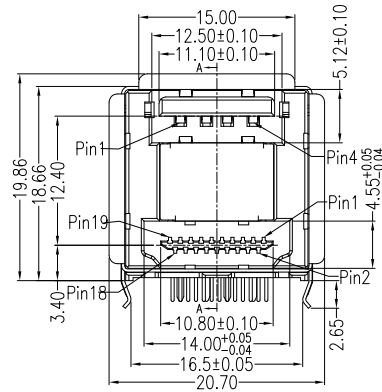
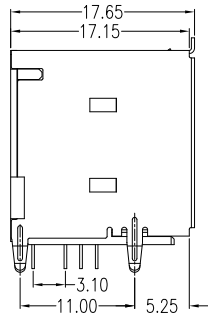
Operation Voltage: 40 VAC max.
 Current Rating: 0.5 Ampere per contact
 Contact Resistance: 10 Milliohms max.
 Insulation Resistance: 100 Megohms min.
 Dielectric Withstanding Voltage: 500 VAC

*USB Electrical Specification

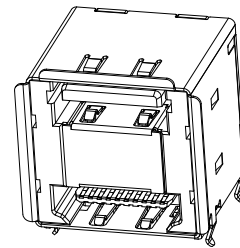
Rated Voltage and Current : 1.5A at 250V AC min;
 Contact Resistance: 30 Milliohms max.
 Insulation Resistance: 1000 megohms min At 500V DC.
 Dielectric Withstanding Voltage: 500 V AC For 1 minute.

*Environmental

Operating Temperature : -55°C to +85°C.



HDMI Pin Position



3D Drawing

RoHS Compliant

TOLERANCES ARE

MORETHANALL
 PCB CONNECTORS
 Cable ASSEMBLIES
 煜倫股份有限公司

DRAWING BY CY

CHECKED BY GENIUS

UNIT / mm

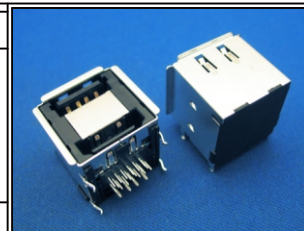
SCALE 1 : 1

DATE

SIZE A4

P PROJECTION

X, ±
 X, ±
 .XX ±
 .XXX ±
 ANG ±



ORDER INFORMATION

UBHDMI-FR-4A19-LF

SERIES

LEADFREE

4 PIN A TYPE TO 19 PIN
 DIP 90°
 FEMALE

DESCRIPTION: USB+HDMI Plug CRT (No Mark)

www.morethanall.com