

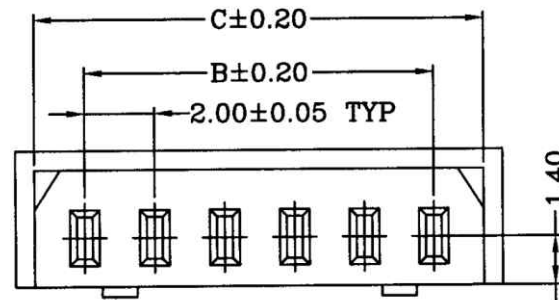
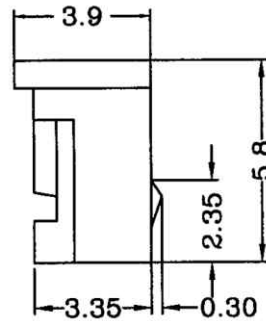
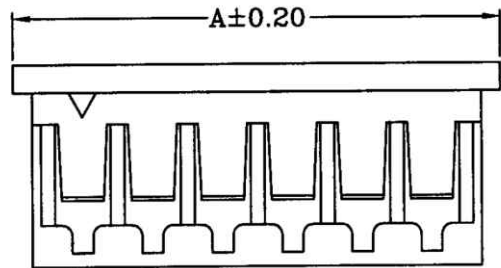
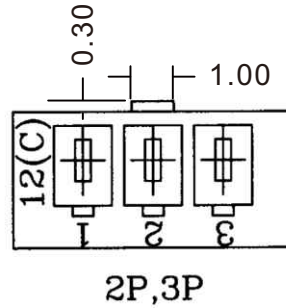
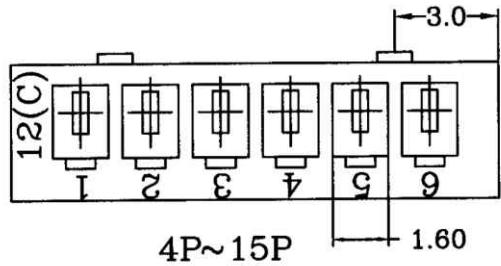
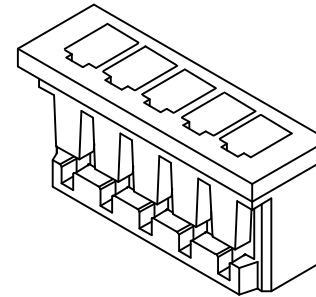
Specifications:

Poles : 2~15 Poles

Material: Nylon 66 UL 94V-0

Pitch between poles : 2.0mm

Applicable Wire Range : AWG #24~#28



Dimensional & Ordering Information:

| Circuits | Part No | Dimensions | | | Pcs/Bag |
|----------|---------|------------|-------|-------|---------|
| | | A | B | C | |
| 2 | MH-H-02 | 6.0 | 2.00 | 4.90 | 1000 |
| 3 | MH-H-03 | 8.0 | 4.00 | 6.90 | 1000 |
| 4 | MH-H-04 | 10.0 | 6.00 | 8.90 | 1000 |
| 5 | MH-H-05 | 12.0 | 8.00 | 10.90 | 1000 |
| 6 | MH-H-06 | 14.0 | 10.00 | 12.90 | 1000 |
| 7 | MH-H-07 | 16.0 | 12.00 | 14.90 | 1000 |
| 8 | MH-H-08 | 18.0 | 14.00 | 16.90 | 1000 |
| 9 | MH-H-09 | 20.0 | 16.00 | 18.90 | 1000 |
| 10 | MH-H-10 | 22.0 | 18.00 | 20.90 | 1000 |
| 11 | MH-H-11 | 24.0 | 20.00 | 22.90 | 1000 |
| 12 | MH-H-12 | 26.0 | 22.00 | 24.90 | 1000 |
| 13 | MH-H-13 | 28.0 | 24.00 | 26.90 | 1000 |
| 14 | MH-H-14 | 30.0 | 26.00 | 28.90 | 1000 |
| 15 | MH-H-15 | 32.0 | 28.00 | 30.90 | 1000 |

RoHS Compliant

TOLERANCES ARE

MORETHANALL
PCB CONNECTORS
Cable ASSEMBLIES

DRAWING BY CY

CHECKED BY GENIUS

UNIT / mm

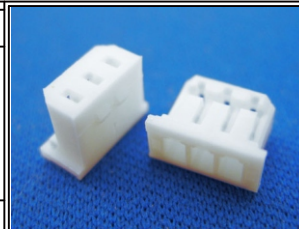
SCALE 1 : 1

DATE

SIZE A4

PPOJECTION

X, ±
.X ±
.XX ±
.XXX ±
ANG ±



ORDER INFORMATION

MH-H-xx-LF
SERIES | LEADFREE
02~15 WAY
HOUSING

煜倫股份有限公司

www.morethanall.com

DESCRIPTION: