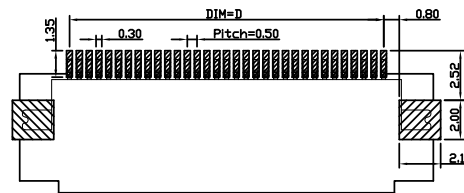
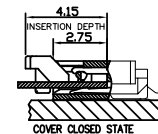
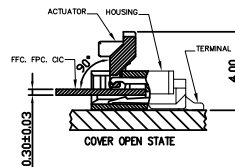


4	GASKET	COPPER ALLOY		PLATED TIN
3	CONTACT	COPPER ALLOY		PLATED TIN
2	ACTUATOR	THERMOPLASTIC	BROWN	UL 94V-0
1	HOUSING	THERMOPLASTIC	NATURAL	UL 94V-0
NO:	DESCRIPTION	MATERIAL	COLOR	REMARK



RECOMMENDED PC BOARD LAYOUT
(ALL TOLERANCE ARE ±0.05)

NOTES:

1. MATERIAL:

- 1.1 HOUSING: THERMOPLASTIC , UL94 V-0;
- 1.2 ACTUATOR: THERMOPLASTIC , UL94 V-0;
- 1.3 CONTACT: PHOSPHOR BRONZE C5191
- 1.4 GASKET: BRASS C2680 (H65)

2. FINISH:

2.1 CONTACT:

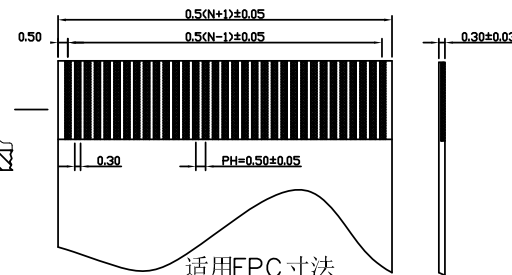
- 2.54 um [100u"] MIN. MATTE-TIN PALTING ON SOLDER TAIL AREA.
- 1.27 um [50u"] MIN. NICKEL UNDERPLATING OVERALL.

2.2 GASKET:

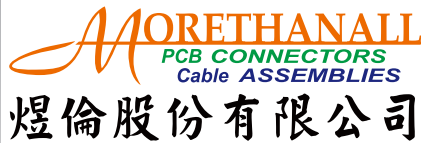
- 2.54 um [100u"] MIN. MATTE-TIN PALTING ON SOLDER TAIL AREA.
- 1.27 um [50u"] MIN. NICKEL PLATING ON SHELL AREA.

標註*記號者為已開模

P數	A	B	C	D	E
* 4	6.40	5.80	2.57	1.50	6.30
* 5	6.90	6.30	3.07	2.00	6.80
* 6	7.40	6.80	3.57	2.50	7.30
7	7.90	7.30	4.07	3.00	7.80
* 8	8.40	7.80	4.57	3.50	8.30
9	8.90	8.30	5.07	4.00	8.80
* 10	9.40	8.80	5.57	4.50	9.30
11	9.90	9.30	6.07	5.00	9.80
* 12	10.40	9.80	6.57	5.50	10.30
13	10.90	10.30	7.07	6.00	10.80
14	11.40	10.80	7.57	6.50	11.30
15	11.90	11.30	8.07	7.00	11.80
16	12.40	11.80	8.57	7.50	12.30
17	12.90	12.30	9.07	8.00	12.80
18	13.40	12.80	9.57	8.50	13.30
19	13.90	13.30	10.07	9.00	13.80
* 20	14.40	13.80	10.57	9.50	14.30
21	14.90	14.30	11.07	10.00	14.80
22	15.40	14.80	11.57	10.50	15.30
23	15.90	15.30	12.07	11.00	15.80
* 24	16.40	15.80	12.57	11.50	16.30
25	16.90	16.30	13.07	12.00	16.80
* 26	17.40	16.80	13.57	12.50	17.30
27	17.90	17.30	14.07	13.00	17.80
28	18.40	17.80	14.57	13.50	18.30
29	18.90	18.30	15.07	14.00	18.80
* 30	19.40	18.80	15.57	14.50	19.30
31	19.90	19.30	16.07	15.00	19.80
* 32	20.40	19.80	16.57	15.50	20.30
33	20.90	20.30	17.07	16.00	20.80
34	21.40	20.80	17.57	16.50	21.30
35	21.90	21.30	18.07	17.00	21.80
36	22.40	21.80	18.57	17.50	22.30
37	22.90	22.30	19.07	18.00	22.80
38	23.40	22.80	19.57	18.50	23.30
39	23.90	23.30	20.07	19.00	23.80
* 40	24.40	23.80	20.57	19.50	24.30
41	24.90	24.30	21.07	20.00	24.80
42	25.40	24.80	21.57	20.50	25.30
43	25.90	25.30	22.07	21.00	25.80
44	26.40	25.80	22.57	21.50	26.30
* 45	26.90	26.30	23.07	22.00	26.80
46	27.40	26.80	23.57	22.50	27.30
47	27.90	27.30	24.07	23.00	27.80
48	28.40	27.80	24.57	23.50	28.30
49	28.90	28.30	25.07	24.00	28.80
* 50	29.40	28.80	25.57	24.50	29.30
51	29.90	29.30	26.07	25.00	29.80
52	30.40	29.80	26.57	25.50	30.30
53	30.90	30.30	27.07	26.00	30.80
* 54	31.40	30.80	27.57	26.50	31.30
55	31.90	31.30	28.07	27.00	31.80
56	32.40	31.80	28.57	27.50	32.30
57	32.90	32.30	29.07	28.00	32.80
58	33.40	32.80	29.57	28.50	33.30
59	33.90	33.30	30.07	29.00	33.80
* 60	34.40	33.80	30.57	29.50	34.30



RoHS Compliant



www.morethanall.com

DRAWING BY CY
CHECKED BY GENIUS
UNIT/mm SCALE 1:1
DATE

SIZE A4 PPROJECTION

TOLERANCES ARE

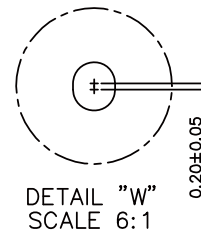
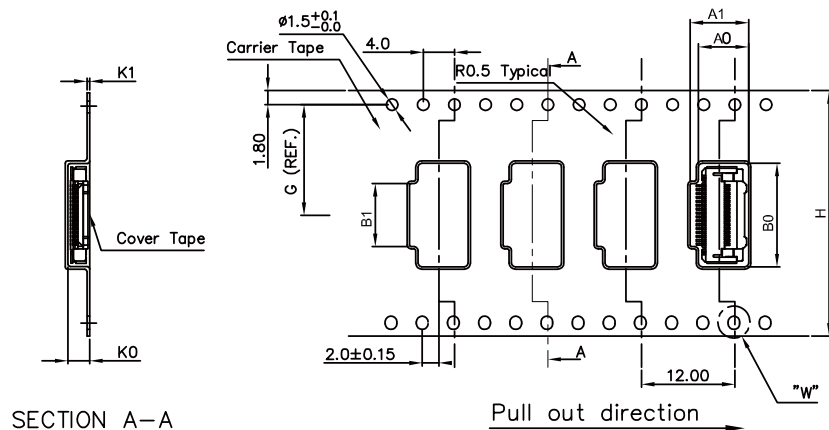
X ±
.X ± 0.20
.XX ± 0.15
.XXX ± 0.05
ANG ±



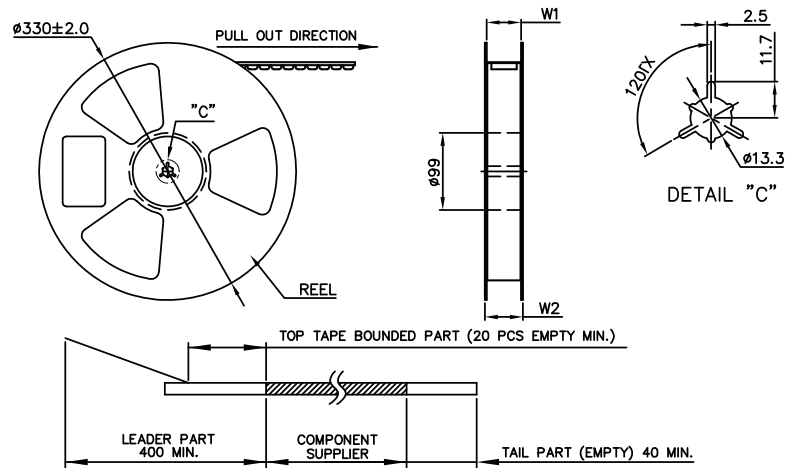
ORDER INFORMATION

FPV-WHB22R-xx-LF
SERIES | | | | | LEADFREE
*04~60WAY
REEL
90°SMT | | | | | HIGH 2.24mm
BOTTOM CONTACT
HINGED ZIF

DESCRIPTION: 0.5ph 2.2H 掀蓋式下接 鍍錫



SECTION A-A



1. 产品方向与图示要求保持一致;
2. 0.5卧贴产品每盘包装数量为2000PCS;
3. 检查胶膜两边是否完全粘贴, 是否平整, 胶膜与载带贴合双边是否一致,
4. 特别注意胶膜双边不可有卷皱, 偏心现象.
5. 检查载带是否有破裂, 变形, 弯曲现象.
6. 间隔2小时测试剥离力, 剥离力大小范围80-150gf.

PIN位	A0	A1	B0	B1	K0	K1	II	W1	W2
4P			8.0	2.0					
5P			8.5	2.5					
6P			9.0	3.0					
7P			9.5	3.5					
8P			10.0	4.0					
9P			10.5	4.5					
10P			11.0	5.0			24	24.5	30
11P			11.5	5.5					
12P			12.0	6.0					
13P			12.5	6.5					
14P			13.0	7.0					
15P			13.5	7.5					
16P			14.0	8.0					
17P			14.5	8.5					
18P			15.0	9.0					
19P			15.5	9.5					
20P			16.0	10.0					
21P			16.5	10.5					
22P			17.0	11.0					
23P			17.5	11.5			32	32.5	38
24P			18.0	12.0					
25P			18.5	12.5					
26P			19.0	13.0					
27P			19.5	13.5					
28P	5.7	6.5	20.0	14.0	2.8	0.35			
29P			20.5	14.5					
30P			21.0	15.0					
31P			21.5	15.5					
32P			22.0	16.0					
33P			22.5	16.5					
34P			23.0	17.0					
35P			23.5	17.5					
36P			24.0	18.0					
37P			24.5	18.5					
38P			25.0	19.0					
39P			25.5	19.5			44	44.5	50
40P			26.0	20.0					
41P			26.5	20.5					
42P			27.0	21.0					
43P			27.5	21.5					
44P			28.0	22.0					
45P			28.5	22.5					
46P			29.0	23.0					
47P			29.5	23.5					
48P			30.0	24.0					
49P			30.5	24.5					
50P			31.0	25.0					
51P			33.0	27.0					
60P			36.0	30.0		0.40	56	56.5	62

RoHS Compliant

MORETHANALL
PCB CONNECTORS
Cable ASSEMBLIES

煜倫股份有限公司

www.morethanall.com

DRAWING BY CY

CHECKED BY GENIUS

UNIT/mm SCALE 1:1

DATE

SIZE A4 PROJECTION

TOLERANCES ARE

X ±
X ± 0.20
.XX ± 0.15
.XXX ± 0.05
ANG ±



ORDER INFORMATION

FPV-WHB22R-xx-LF
SERIES | | | | LEADFREE
*04-60WAY
REEL
HIGH 2.24mm
BOTTOM CONTACT
HINGED ZIF

DESCRIPTION: 0.5ph 2.2H 掀蓋式下接 鍍錫