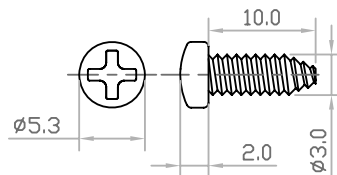


SCREW A TYPE FOR LOCK INSULATOR (4 PCS)



SCREW B TYPE FOR LOCK SR (2 PCS)

### MECHANICAL

#### INSULATOR MATERIAL:

PBT & Glass-fibre reinforced  
UL 94V-0, 1 Pcs

#### HOOD MATERIAL:

Aluminum, 1 Pcs

#### THUMSCREW MATERIAL:

Copper Alloy, 2 Pcs

#### SCREW FOR LOCK INSULATOR MATERIAL:

Steel, 4 Pcs

#### SCREW FOR LOCK SR MATERIAL:

Steel, 2 Pcs

#### WIRE SIZE:

AWG 24 or 26 or 28

### ELECTRICAL

#### CURRENT RATING:

7 Amp

#### WITHSTANDING VOLTAGE:

AC 1200V Min. (for one minute)

#### INSULATION RESISTANCE:

1000MΩ Min.(at 500V DC)

#### CONTACT RESISTANCE:

10mΩ Max. mated

#### WORKING TEMPERATURE:

-55° C to +105° C

**RoHS Compliant**

TOLERANCES ARE

**MORETHANALL**  
PCB CONNECTORS  
Cable ASSEMBLIES

DRAWING BY CY

X. ± 0.30

CHECKED BY GENIUS

.X ± 0.25

UNIT / mm

SCALE 1 : 1

.XX ± 0.15

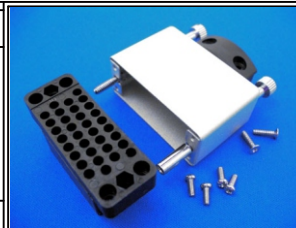
DATE

.XXX ±

ANG ± 3°

SIZE A4

PJECTION



### ORDER INFORMATION

V35-SHW-34-LF  
SERIES | LEADFREE  
34WAY  
WHITE COVER  
HOUSING  
FEMALE

煜倫股份有限公司

www.morethanall.com

DESCRIPTION: V.35 CONNECTOR FEMALE WITH PLASTIC SR WITHOUT PIN