

SPECIFICATION

MATERIAL

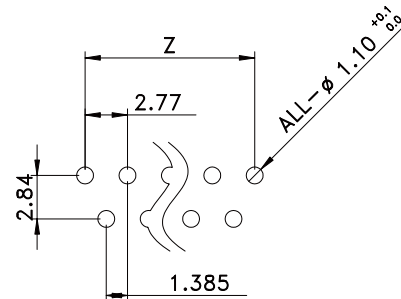
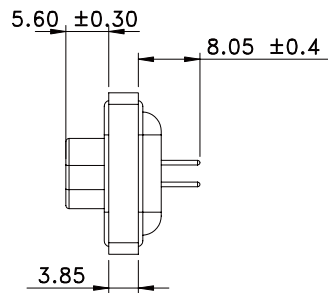
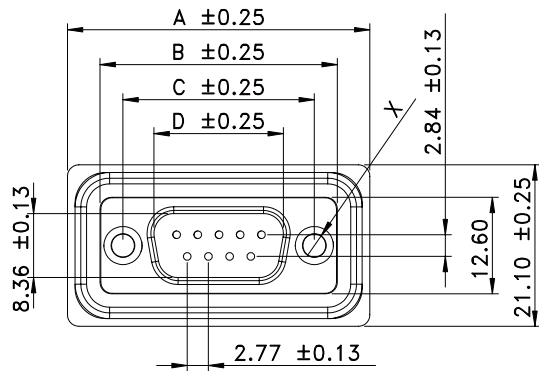
Insulator: Thermoplastic
Contacts: Copper Alloy
Shell: Steel
O-ring: Silicone
Sealant: Epoxy-Resin
Rivet: Copper Alloy

CONTACT PLATING

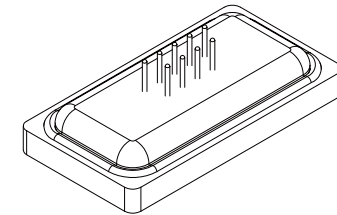
Underplate :50u"~150u" Nickel
Contact Area :1u"~30u" Selective Gold
Rivet :50u"~100u" Nickel

ELECTRICAL

Operation Voltage :250 VAC Max
Current Rating :3 Amps Max
Contact Resistance :15 Mohms Min 500 VDA
Dielectric Withstanding Voltage 1000 VAC/Minute
Temperature Range : -55°C TO $+105^{\circ}\text{C}$



Recommended P.C.B LAYOUT
TOLERANCE : $\pm 0.05\text{mm}$



DIM FOR "X"

- 1=4.8mm Closed Circular Rivet(M3)
- 2=4.8mm Closed Circular Rivet(4#40)

PIN	A	B	C	D	X	Y	Z
9	39.50	31.00	25.00	16.90	25.20	20	11.08
15	48.00	39.30	33.32	25.20	33.50	28.30	19.39
25	61.50	53.20	47.04	38.90	47.20	42.00	33.24
37	77.80	69.50	63.50	55.40	63.70	58.50	49.86

RoHS Compliant

TOLERANCES ARE

MORETHANALL
PCB CONNECTORS
Cable ASSEMBLIES

煜倫股份有限公司

www.morethanall.com

DRAWING BY CY

CHECKED BY GENIUS

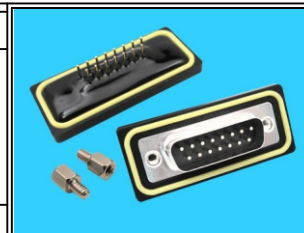
UNIT/ mm SCALE 1:1

DATE

SIZE A4

PJECTION

X, \pm
.X \pm
.XX \pm
.XXX \pm
ANG \pm



ORDER INFORMATION

WPDB-PDNH-xx-LF

SERIES | | | | | LEADFREE
| | | | | 09~37WAY
| | | | | HEX SCREW
| | | | | NUT
| | | | | DIP180°
| | | | | MALE

DESCRIPTION: WATER-PROOF D-SUB (DIP180° MALE)