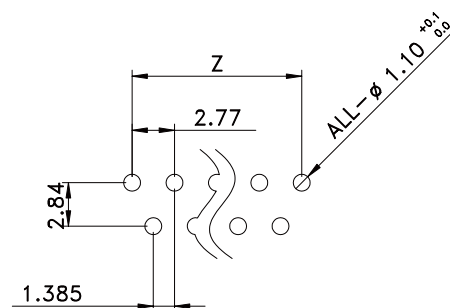
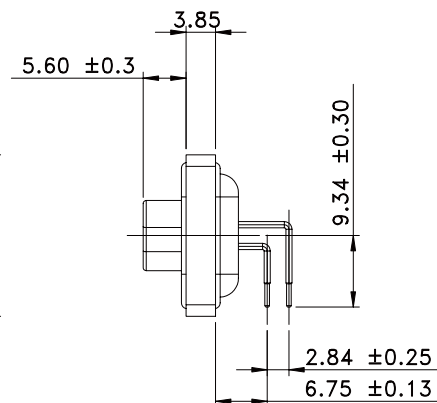
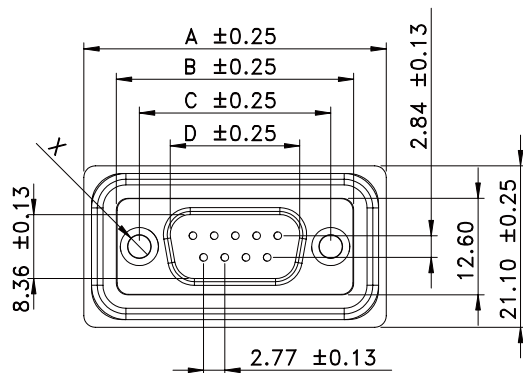


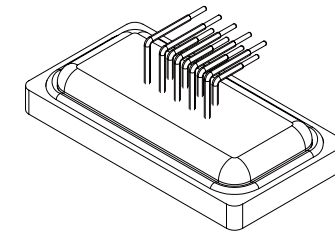
Recommended Panel Cut-Out  
TOLERANCE : ±0.05mm



Recommended P.C.B LAYOUT  
TOLERANCE : ±0.05mm

**SPECIFICATION**  
**MATERIAL**  
Insulator: Thermoplastic  
Contacts: Copper Alloy  
Shell: Steel  
O-ring: Silicone  
Sealant: Epoxy-Resin  
Rivet: Copper Alloy

**CONTACT PLATING**  
Underplate :50u"~150u" Nickel  
Contact Area :1u"~30u" Selective Gold  
Rivet :50u"~100u" Nickel  
**ELECTRICAL**  
Operation Voltage :250 VAC Max  
Current Rating :3 Amps Max  
Contact Resistance :15 Mohms Min 500 VDA  
Dielectric Withstanding Voltage 1000 VAC/Minute  
Temperature Range :-55°C TO +105°C  
Degree of protection:IP67 (IEC 60529)



DIM FOR "X"  
1=4.8mm Closed Circular Rivet(M3)  
2=4.8mm Closed Circular Rivet(4#40)

PIN	A	B	C	D	W	Y	Z
9	39.50	31.00	25.00	16.91	25.20	20	11.08
15	48.00	39.30	33.32	25.25	33.50	28.30	19.39
25	61.50	53.20	47.04	38.97	47.20	42	33.24
37	77.80	69.50	63.50	55.43	63.70	58.5	49.86

**RoHS Compliant**

TOLERANCES ARE

**MORETHANALL**  
PCB CONNECTORS  
Cable ASSEMBLIES

煜倫股份有限公司

www.morethanall.com

DRAWING BY CY

CHECKED BY GENIUS

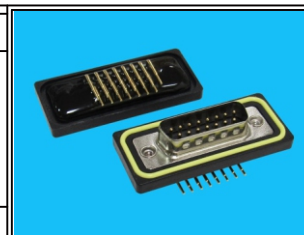
UNIT/mm SCALE 1:1

DATE

SIZE A4

PJECTION

X, ±  
.X ±  
.XX ±  
.XXX ±  
ANG ±



**ORDER INFORMATION**

WPDB-PRN-xx-LF

SERIES | | | LEADFREE  
| | | 09~37WAY  
| NUT  
| DIP 90°  
MALE

DESCRIPTION: WATER-PROOF D-SUB (DIP90° MALE)