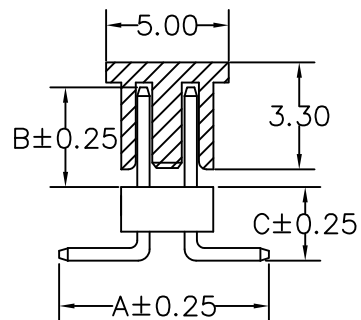
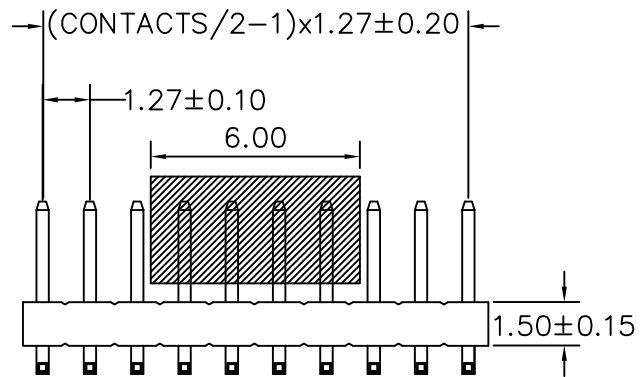


RECOMMENDED P.C.B LAYOUT



A: 5.70 mm B: 3.70 mm C: 2.40 mm

CONTACTS	2X26
2X2	2X27
2X3	2X28
2X4	2X29
2X5	2X30
2X6	2X31
2X7	2X32
2X8	2X33
2X9	2X34
2X10	2X35
2X11	2X36
2X12	2X37
2X13	2X38
2X14	2X39
2X15	2X40
2X16	2X41
2X17	2X42
2X18	2X43
2X19	2X44
2X20	2X45
2X21	2X46
2X22	2X47
2X23	2X48
2X24	2X49
2X25	2X50

MATERIAL

HOUSING : NY6T,UL94V-0
 CAP : NY6T,UL94V-0
 CONTACT : COPPER ALLOYS
 PLATED : GOLD-FLASH
 COLOR : BLACK

SPECIFICATION

CURRENT: 1A
 OPERATING TEMPERATURE: -55°C TO +105°C
 CONTACT RESISTANCE : 20 MILLIOHMS MAX
 INSULATION RESISTANCE : 1000 MEGAOHMS MIN
 DIELECTRIC STRENGTH : 300 V AC MIN

RoHS Compliant

TOLERANCES ARE



煜倫股份有限公司

www.morethanall.com

DRAWING BY CY

CHECKED BY GENIUS

UNIT / mm

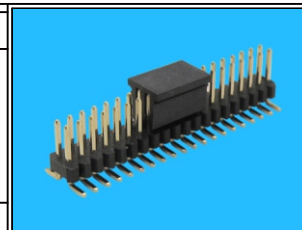
SCALE 1 : 1

DATE

SIZE A4

PJECTION

X. ±
 .X ± 0.38
 .XX ± 0.25
 .XXX ±
 ANG ± 5°



ORDER INFORMATION

PA-V24X37C-2Xxx-LF
 SERIES | LEADFREE
 2X02:04 WAY
 2X50:100 WAY
 180°SMT HIGH 2.4mm | CAP CONTACT 3.7mm
 NON POST

DESCRIPTION: PH1.27 SMT+CAP H:1.5 2*XXPIN