

# MATERIAL

INSULATION: NYLON

MATERIAL: BRASS

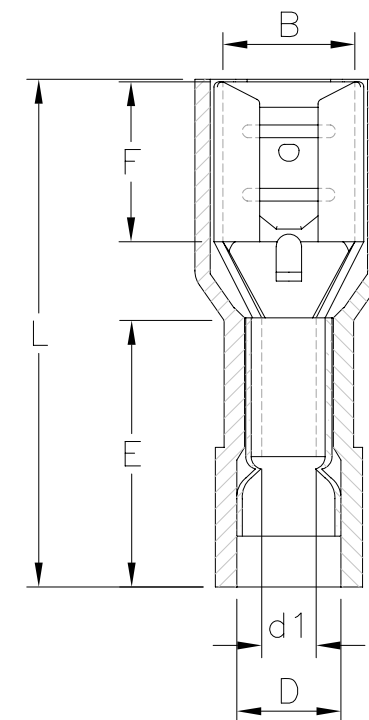
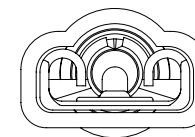
TIN PLATING

## MAXIMUM ELECTRIC CURRENT

A. W. G	22	20	18	16	14
MAX AMP	3	4	7	10	15

### NOTE:

1. MAXIMUM ELECTRICAL RATING: 105°C 300 VOLTS
2. REINFORCEMENT SLEEVE: C TYPE SLEEVE
3. WIRE RANGE: 22-16 AWG / 0.5-1.5 mm<sup>2</sup>  
INSULATED COLOR: RED
4. WIRE RANGE: 16-14 AWG / 1.5-2.5 mm<sup>2</sup>  
INSULATED COLOR: BLUE
5. MATERIAL THICKNESS: t  
TOLERANCE: ±0.05



WIRE RANGE AWG/mm <sup>2</sup>	產品編號 ITEM NO.	NEMA TAB	B ±0.20	F ±0.30	L ±1.00	E ±0.60	D ±0.50	d1 ±0.20	t
22-16 AWG 0.5-1.5 mm <sup>2</sup>	Q187-FT5NFAC-16	0.5x4.8	5.0	6.5	20.0	10.5	4.2	1.7	0.35
	Q187-FT8NFAC-16	0.8x4.8	5.0	6.5	20.0	10.5	4.2	1.7	0.35
16-14 AWG 1.5-2.5 mm <sup>2</sup>	Q187-FT5NFAC-14	0.5x4.8	5.0	6.5	20.0	10.5	4.9	2.3	0.35
	Q187-FT8NFAC-14	0.8x4.8	5.0	6.5	20.0	10.5	4.9	2.3	0.35

RoHS Compliant

TOLERANCES ARE

**MORETHANALL**  
PCB CONNECTORS  
Cable ASSEMBLIES

DRAWING BY CY

X. ±

CHECKED BY GENIUS

.X ±

UNIT / mm

SCALE 1:1

.XXX ±

DATE

ANG ±

SIZE A4

PPOJECTION



### ORDER INFORMATION

Q187-FTxNFAC-xx-LF

SERIES FEMALE TERMINAL 5: THICKNESS 0.5mm 8: THICKNESS 0.8mm

T 14: 14-16 AWG LEADFREE 16: 16-22 AWG COPPER A TYPE FULL NYLON

煜倫股份有限公司

www.morethanall.com

DESCRIPTION: