

RECOMMENDED P.C.B LAYOUT FOR TOP ENTRY

Specifications  
 Current Rating:3Amp  
 Insulation Resistance:1000MΩMin.  
 Dielectric Withstanding Voltage:600VAC  
 Contact Resistance:20mΩMax.  
 Operating Temperature:-40°C to +105°C  
 Materials  
 Contact Material:Phosphor Bronze  
 Insulator Material:High Temperature Thermoplastic, UL 94V-0 Nylon 6T (無鹵) or the equivalent material

RoHS Compliant

TOLERANCES ARE

**MORETHANALL**  
 PCB CONNECTORS  
 Cable ASSEMBLIES

煜倫股份有限公司

www.morethanall.com

DRAWING BY CY

CHECKED BY GENIUS

UNIT / mm

SCALE 1 : 1

DATE

SIZE A4

P PROJECTION

X. ± 0.30  
 .X ± 0.25  
 .XX ± 0.15  
 .XXX ± 0.10  
 ANG ±



ORDER INFORMATION

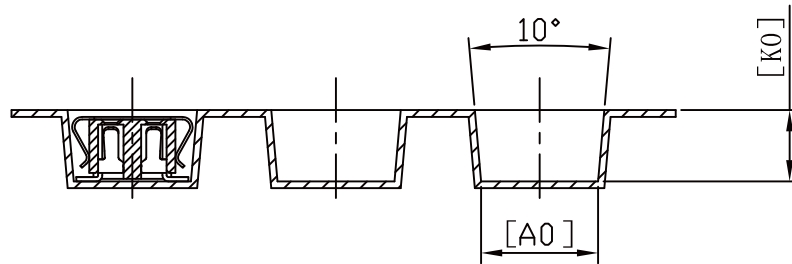
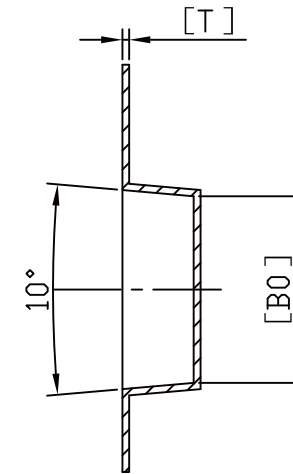
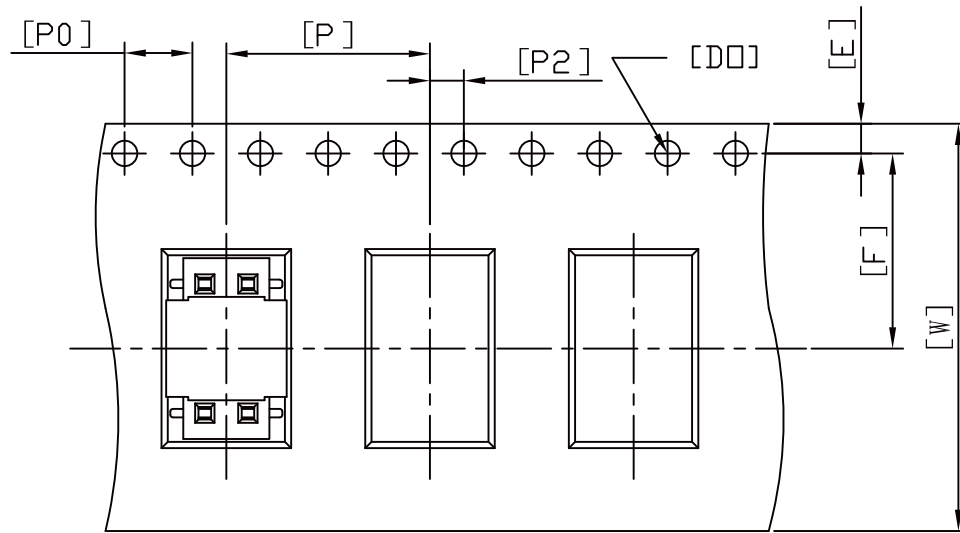
F-Z37XCR-2Xxx-LF

SERIES | LEADFREE  
 | 2X02:04WAY  
 | 2X40:80WAY

BOTTOM ENTRY SMT | REEL  
 HIGH 3.7 mm | CAP  
 | NON POST

DESCRIPTION: 2.54 FEMALE HEADER DUAL ROWS SMT TYPE CONNECTOR

供應商:京盾  
4150340



Notes:

- 1.Packing Conforms EIA-481-B Standards.
- 2.10 sprocket hole pitch cumulative
- 3.Carrier camber is within 1mm in250mm.
- 4.Marterial:BLACK Polystyrene.
- 5.Packing length per 13"Reel:15.4Meters.
- 6.Component load per 13"Reel:1200PCS.

W	24.00 <sup>+0.30</sup> / <sub>-0.30</sub>	T	0.40±0.05	Po	4.00±0.10	Ao	6.90±0.15
		F	11.50±0.10	P2	2.00±0.10	Bo	11.00±0.15
E	1.75±0.10	P	12.00±0.10	Do	ø1.50 ± <sub>0</sub> <sup>0.10</sup>	Ko	4.20±0.10

RoHS Compliant

TOLERANCES ARE

**MORETHANALL**  
PCB CONNECTORS  
Cable ASSEMBLIES

DRAWING BY CY

X. ± 0.30

CHECKED BY GENIUS

.X ± 0.25

UNIT / mm

SCALE 1 : 1

.XX ± 0.15

DATE

.XXX ± 0.10

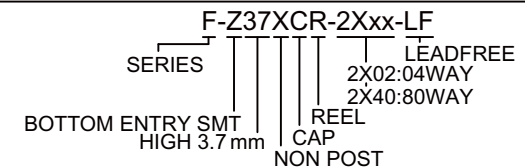
ANG ±

SIZE A4

PJECTION



ORDER INFORMATION



煜倫股份有限公司

www.morethanall.com

DESCRIPTION: 2.54 FEMALE HEADER DUAL ROWS SMT TYPE CONNECTOR