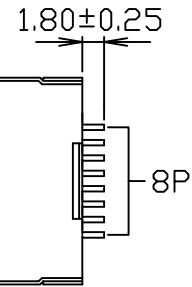
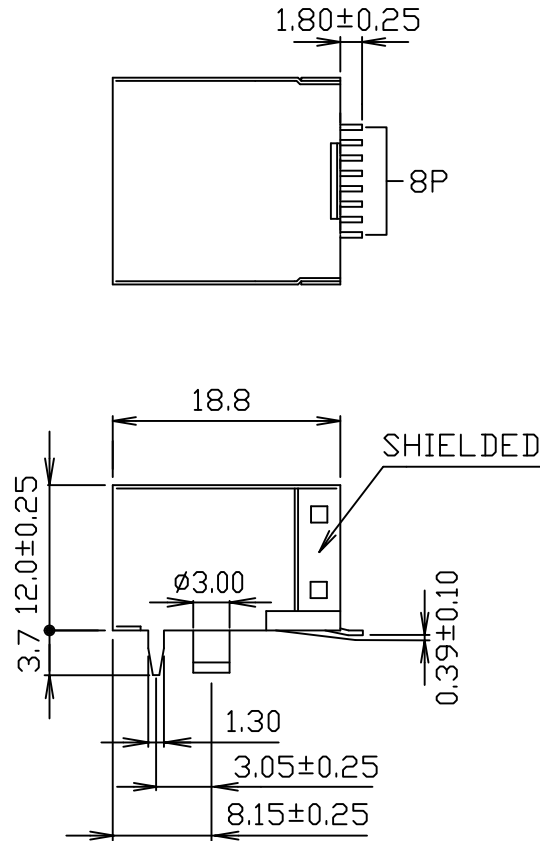
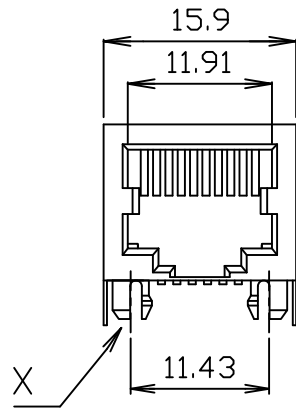
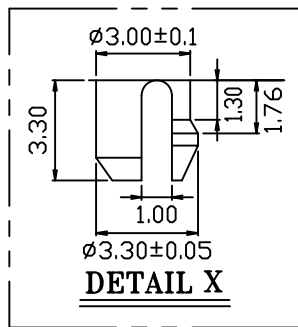
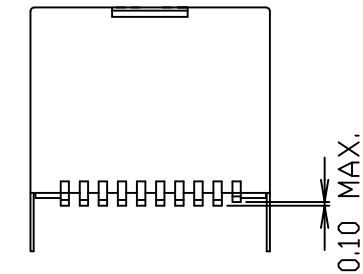


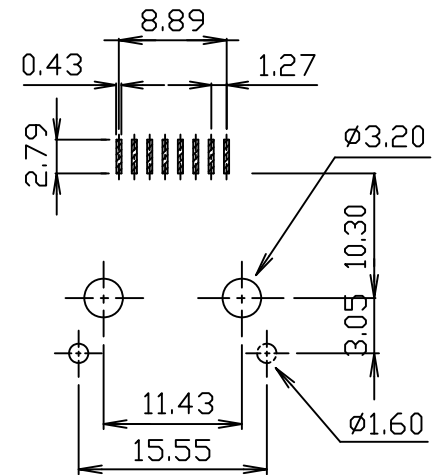
COPLANARITY:

THE MAXIMUM DISTANCE (0.10mm)
BETWEEN LOWEST AND
HIGHEST PIN WHEN
BOTTOM OF PART PUT
ON A FLAT SURFACE



MATERIALS:

- HOUSING-NYLON ZYTEL FR-50
HEAT DEFLECTION TEMP.255°
BLACK ODOR, UL94V-0
- CONTACTS -0.35mm THICK PHOS-BRONZE PLATED
WITH HARD GOLD AND TIN/LEAD
IN SOLDER AREA.
- SHIELD-0.25mm THICK COPPER ALLOY,
PLATED WITH NICKEL.
- CAVITY CONFIRMS TO FCC RULES AND REGULATIONS
PART 68,SUBPART F.



PC Board Layout

RoHS Compliant

TOLERANCES ARE

MORETHANALL
PCB CONNECTORS
Cable ASSEMBLIES

DRAWING BY CY

X, ±

CHECKED BY GENIUS

.X ± 0.25

UNIT / mm

SCALE 1 : 1

.XX ± 0.13

DATE

.XXX ± 0.05

ANG ±

SIZE A4

PROJECTION



ORDER INFORMATION

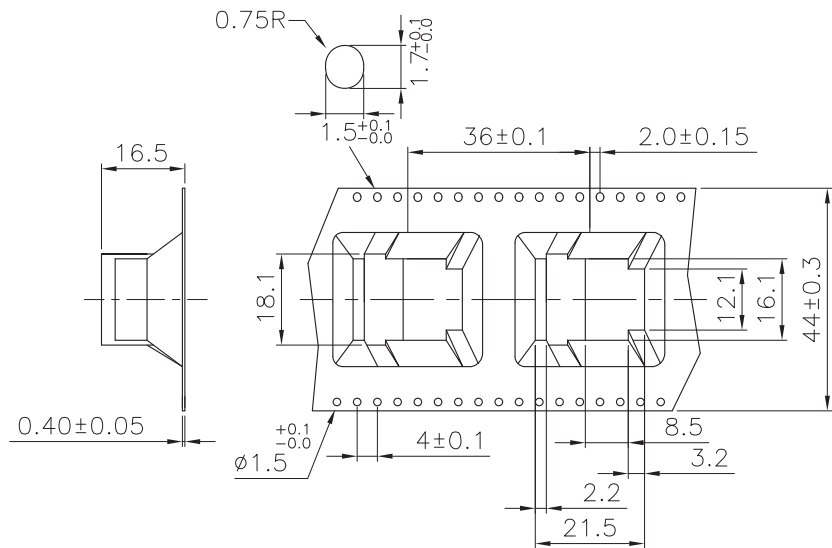
MJWF12-KX06A3R-0808-LF

SERIES REEL FRONT TAB 3.05mm
BLACK 06u" GOLD NON EAR
8P8C LEADFREE

DESCRIPTION: 10POSITION SIDE ENTRY SMT TYPE
VERY LOW PROFILE, SHIELDED PCB JACK

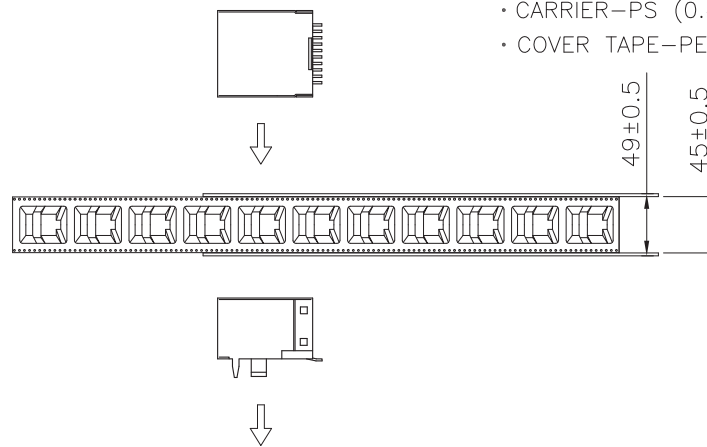
煜倫股份有限公司

www.morethanall.com



MATERIALS:

- REEL-6mm THICK PLASTIC WHEEL.
- CARRIER-PS (0.40mm THICK TAPE).
- COVER TAPE-PE (0.10mm THICK TAPE).

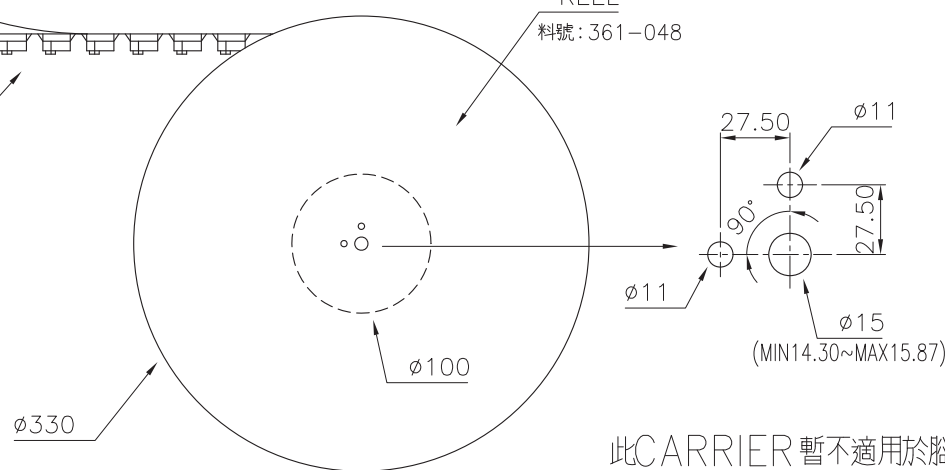


支撐架料號: 361-058(X2)
 軸外保護帶料號: 361-270(繞兩圈)

COVER TAPE
 料號: 361-033

CARRIER
 料號: 361-266

REEL
 料號: 361-048



此CARRIER 暫不適用於腳後及有彈片型式

NOTES:

- THE DIRECTION OF JACKS PUT INTO CARRIER.
- 10 EMPTY CAVITIES FOR BOTH OF TOP AND BOTTOM OF THE CARRIER.
- 100 PCS PRODUCTS BE PACKAGED ONE REEL.
- CARTON SIZE: 345(L)X345(W)X315(H)
 6 REEL/CARTON
 TOTAL: 600 PCS

RoHS Compliant

TOLERANCES ARE

MORETHANALL
 PCB CONNECTORS
 Cable ASSEMBLIES
煜倫股份有限公司

DRAWING BY CY

CHECKED BY GENIUS

UNIT / mm SCALE 1 : 1

DATE

SIZE A4

X, ±
 .X ± 0.25
 .XX ± 0.13
 .XXX ± 0.05
 ANG ±

PJECTION



ORDER INFORMATION

MJWF12-KX06A3R-0808-LF

SERIES REEL LEADFREE
 BLACK FRONT TAB 3.05mm
 06u" GOLD
 NON EAR

DESCRIPTION: 10P TAPE & REEL PACKAGING SPEC.

www.morethanall.com