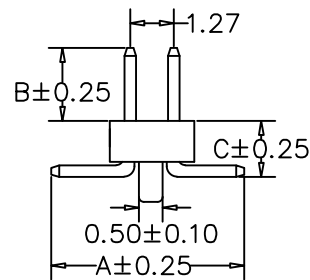
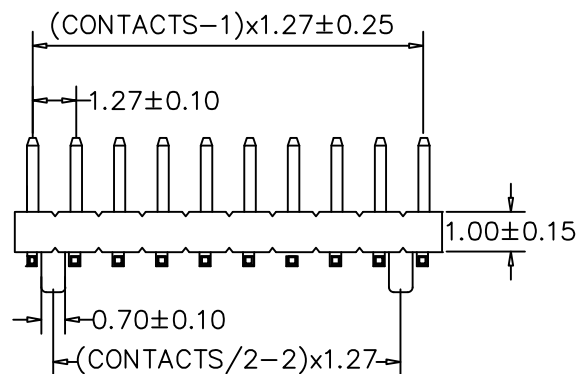


RECOMMENDED P.C.B LAYOUT



A: 5.50 mm B: 3.00 mm C: 1.60 mm

CONTACTS	2X27
2X4	2X28
2X5	2X29
2X6	2X30
2X7	2X31
2X8	2X32
2X9	2X33
2X10	2X34
2X11	2X35
2X12	2X36
2X13	2X37
2X14	2X38
2X15	2X39
2X16	2X40
2X17	2X41
2X18	2X42
2X19	2X43
2X20	2X44
2X21	2X45
2X22	2X46
2X23	2X47
2X24	2X48
2X25	2X49
2X26	2X50

MATERIAL
 HOUSING : NYLON 6T,UL94V-0
 CONTACT : COPPER ALLOYS
 PLATED : GOLD-FLASH
 COLOR : BLACK

SPECIFICATION
 CURRENT: 1A
 OPERATING TEMPERATURE: -55°C TO +105°C
 CONTACT RESISTANCE : 20 MILLIOHMS MAX
 INSULATION RESISTANCE : 5000 MEGAOHMS MIN
 DIELECTRIC STRENGTH : 1000 VAC MIN

RoHS Compliant

TOLERANCES ARE

MORETHANALL
 PCB CONNECTORS
 Cable ASSEMBLIES

DRAWING BY CY

X, ±

CHECKED BY GENIUS

.X ± 0.38

UNIT / mm

SCALE 1 : 1

.XX ± 0.25

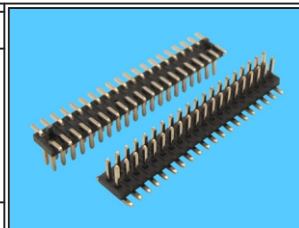
DATE

.XXX ±

ANG ± 5°

SIZE A4

PPOJECTION



ORDER INFORMATION

PA-V16P30-2Xxx-LF
 SERIES | LEADFREE
 180°SMT | 2X02:04 WAY
 POST | 2X50:100 WAY
 CONTACT 3.0mm
 HIGH 1.6mm

煜倫股份有限公司

www.morethanall.com

DESCRIPTION: