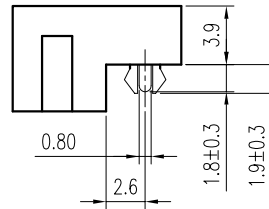
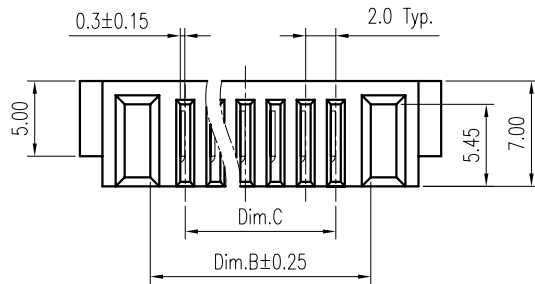


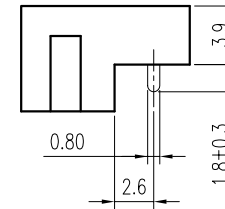
Part No.	Dim.	Amount of Pins	Dim.A	Dim.B	Dim.C	Dim.D
BCT20-SR039x-03		3	15.00	8.65	4.00	10.35
BCT20-SR039x-04		4	17.00	10.65	6.00	12.35
BCT20-SR039x-05		5	19.00	12.65	8.00	14.35
BCT20-SR039x-06		6	21.00	14.65	10.00	16.35
BCT20-SR039x-07		7	23.00	16.65	12.00	18.35
BCT20-SR039x-08		8	25.00	18.65	14.00	20.35

Notes:

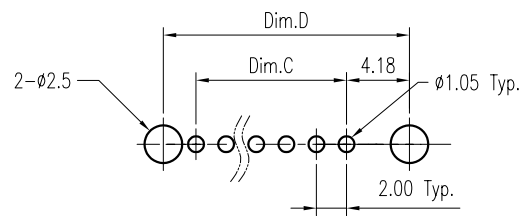
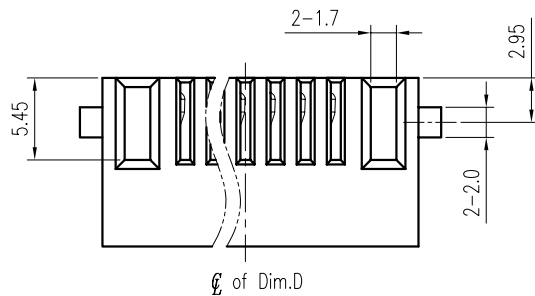
- Material :
Housing : Thermoplastic UL 94V-0 ,Black
Terminal : Copper Alloy
Forklock : Copper Alloy
- Finish :
Terminal : Selected Gold on Contact Area, G/F on Solder Tails, Both over 50u" Min. Ni Under-plated Overall.
Forklock : 1u" Min. Gold over 50u" Min. Ni Under-plated Overall.
- 3 : 5u" Min. Gold on Contact Area



BCT20-SR39Z-xx
With Forklock



BCT20-SR39X-xx
Without Forklock



Recommended P.C.B. Layout
Layout Tolerance = ± 0.05 mm

RoHS Compliant



煜倫股份有限公司

www.morethanall.com

DRAWING BY CY

CHECKED BY GENIUS

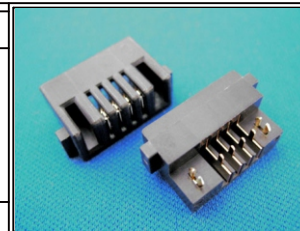
UNIT / mm SCALE 1 : 1

DATE

SIZE A4

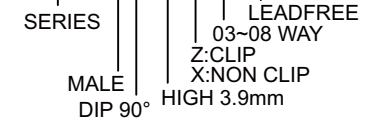
TOLERANCES ARE

- X. ±
- .X ±
- .XX ±
- .XXX ±
- ANG ±



ORDER INFORMATION

BCT20-SR039x-xx-LF



DESCRIPTION: 2.0mm Pitch Battery Conn. Female Type