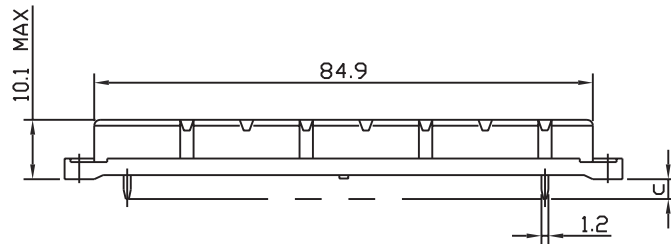
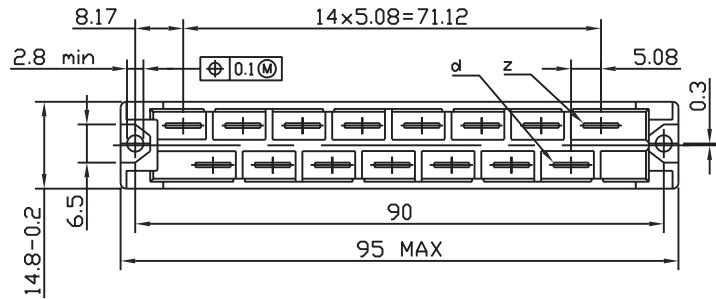
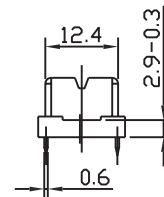
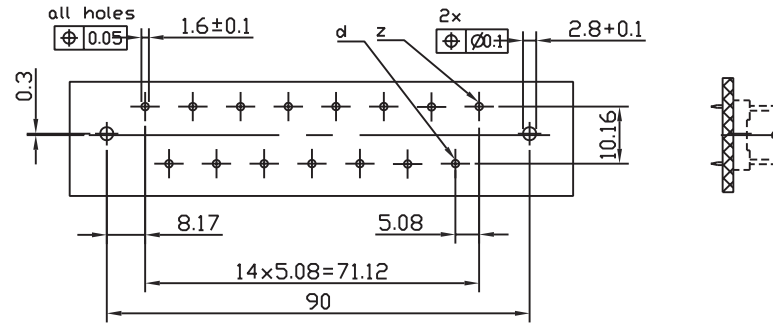


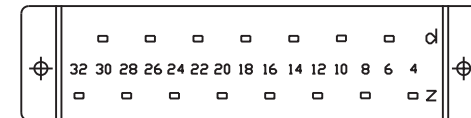
Dimensions



Recommended P.C.B. layout



Contact arrangement view from termination side



Ordering Information

NO. OF CONTACTS	15
POSITION	d+z
TERMINATION	PART NUMBER
4.0 mm	UH-SD-15
10.0 mm	UH-SD10-15

CODE NO.	4	10
C =	4.0	10
T =	0.6x1.2	0.6x1.2

Technical data

Housing	PBT & 30%Class Fiber(UL94-0)
Contact	Female : Brass
Operating temperature	-55°C~+105°C
Contact resistance	8m(ohm)max.at DC 100mA
Insulator resistance	1000M(ohm)min.at DC 500V
Current rating	15 AMP
Withstanding voltage	AC 3100V for 1 minute
Insertion force	90N max
Withdrawal force	0.2N/pin min
Contact Rating	Ag ,Plating

RoHS Compliant

TOLERANCES ARE



煜倫股份有限公司

www.morethanall.com

DRAWING BY CY

CHECKED BY GENIUS

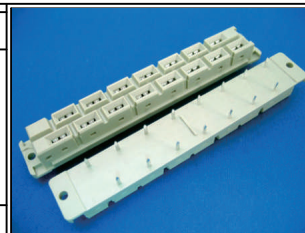
UNIT/mm SCALE 1:1

DATE

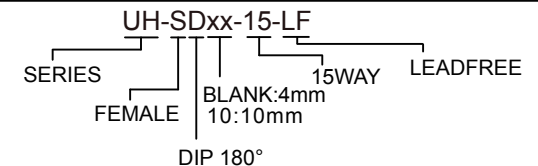
SIZE A4

PJECTION

X, ±
X, ±
.XX ± 0.10
.XXX ± 0.05
ANG ±



ORDER INFORMATION



DESCRIPTION: DIN 41612 EUROCARD CONNECTORS