

NOTE:

1.Remove pins:9,10,11,12,21,22,23,24,25,26,35,36,37,38,39,40
47,48,49,50,51,52,59,60,61,62 not available as standard.

MATERIALS

- * Body : Black Liquid Crystal Polstal (L.C.P.) UL (94V-0)
- * Contact : Copper alloy
- * Contact plated : Au over nicket ,Ped tin plating

SPECIFICATION

- * Contact curret rating : 1 AMP
- * Conact resistance : 30 Milli OHMS Max.
- * Insulation resistance : 10,000 megoohms Min. initial
- * Operating temperature : -55°C to +125°C
- * Dielectric Withstanding Voltage : 1.0KVAC
- * Capacitance : 1pf Max.
- * Durability : 25 cycle Min.
- * Conact force : Low mating force

RoHS Compliant

TOLERANCES ARE



煜倫股份有限公司

www.morethanall.com

DRAWING BY CY

CHECKED BY GENIUS

UNIT / mm

SCALE 1 : 1

DATE

SIZE A4

X. ± 0.50

.X ± 0.35

.XX ± 0.25

.XXX ± 0.05

ANG ±

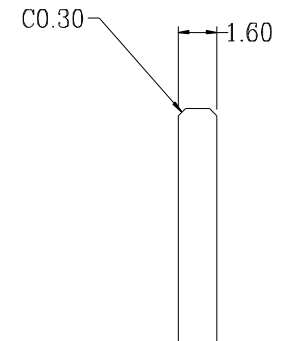
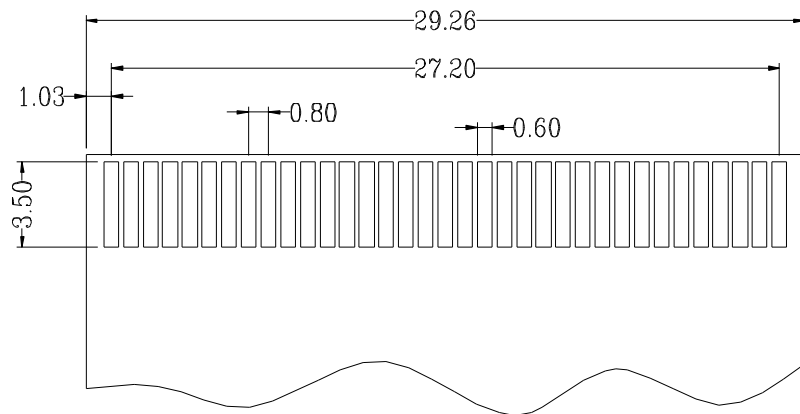
P PROJECTION



ORDER INFORMATION

E08-VP-07044-LF
SERIES | 70P44C | LEADFREE
POST
180°SMT

DESCRIPTION: 0.8mm Card Edge Connector 70P SMD type



MORETHANALL
PCB CONNECTORS
Cable ASSEMBLIES

煜倫股份有限公司

www.morethanall.com

RoHS Compliant

DRAWING BY CY

CHECKED BY GENIUS

UNIT / mm

SCALE 1 : 1

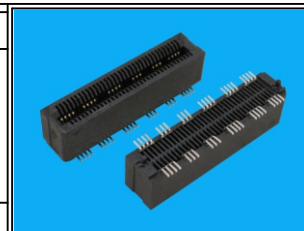
DATE

SIZE A4

TOLERANCES ARE

X. ± 0.50
.X ± 0.35
.XX ± 0.25
.XXX ± 0.05
ANG ±

PJECTION



ORDER INFORMATION

E08-VP-07044-LF
SERIES | 70P44C | LEADFREE
POST
180°SMT

DESCRIPTION: 0.8mm Card Edge Connector 70P SMD type