

NOTES:

***Material**

Body: LCP, UL 94V-0 Rated.
 Color: Black
 Contacts: Phosphor Bronze
 Plating : Au Plating on Contact Area,
 Sn (100u" Min.) plating on solder tail
 Ni (50u" Min.) underplating overall.
 Harpoon: Brass
 Plating: Nickel(50u" Min.)

***Mechanical:**

Insertion Force: 1.15N max per contact pair;
 Withdrawal Force: 0.15N min per contact pair;
 Contact Retention Force: 3.5N min per contact;
 Durability: 50 cycles

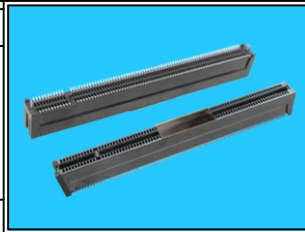
***Electrical Specification**

Contact Resistance : 30 Milliohms Max.
 Current Resistance : 1.1 Ampere
 Insulation Resistance : 1000 Megohms Min, At 500V AC.
 Operating Temperature : -55°C to +105°C

RoHS Compliant

TOLERANCES ARE

X. ± 0.30
 .X ± 0.35
 .XX ± 0.25
 .XXX ± 0.15
 ANG ± 3°



ORDER INFORMATION

PCIX4-VMPC-164-LF
 SERIES | | | | LEADFREE
 | | | | 164WAY
 | | | | MYLAR
 | | | | POST
 | | | | METAL FOOT
 | | | | 180°SMT

DESCRIPTION: PCI Express 4.0 SMT Type (Straight Metal Posts)

MORETHANALL
PCB CONNECTORS
Cable ASSEMBLIES
煜倫股份有限公司
www.morethanall.com

DRAWING BY CY
 CHECKED BY GENIUS
 UNIT / mm SCALE 1 : 1
 DATE
 SIZE A4 PPROJECTION