

**FEATURES:**

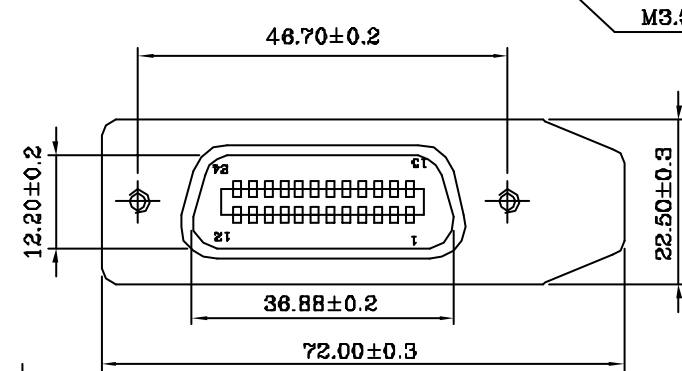
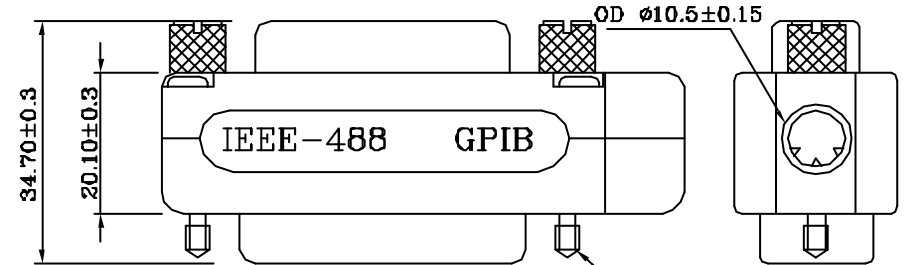
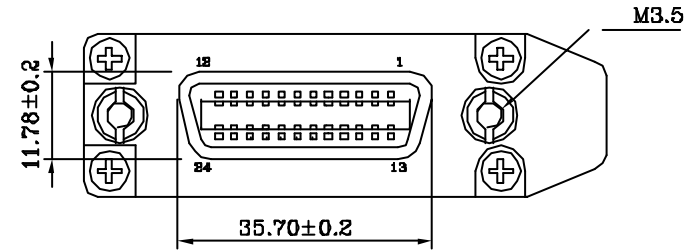
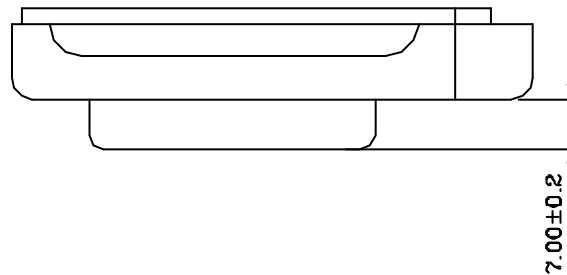
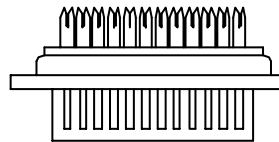
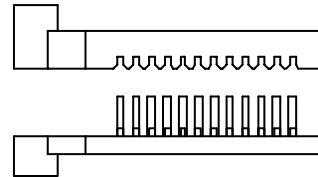
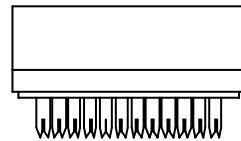
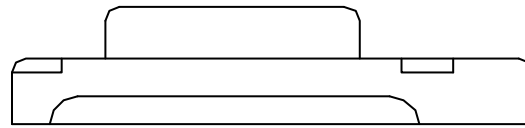
- 24 pos interface bus connector
- Cable(24) conductors 24AWG 26AWG
- Connector kits available too for assembly fabrication
- Consists of two rack and panel type
- Design includes a Two-Piece ABS material RF shield enclosing the 24 pos back to back connector

**MATERIALS:**

- Housing And Cover: thermoplastic P.B.T UL94V-0 black
- Contacts: Phosphor bronze gold selective plated

**ELECTRICAL:**

- Current Rating: 1 Amp
- Insulation Resistance: 500MΩ/Min
- Withstanding Voltage: 500V AC/Min
- Contact Resistance: 35mΩ Max
- Temperature Range: -55°C ~ +105°C



RoHS Compliant

TOLERANCES ARE

**MORETHANALL**  
PCB CONNECTORS  
Cable ASSEMBLIES

DRAWING BY CY

X.±

CHECKED BY GENIUS

.X±

UNIT / mm

SCALE 1 : 1

.XX±

DATE

.XXX±

ANG±

SIZE A4

PJECTION



ORDER INFORMATION

CTA-C-24-LF  
SERIES | LEADFREE  
24 WAY  
CHROMATE

DESCRIPTION: Connectors For Interface Bus Applications PER IEEE STD.488 (GPIB) ABS Metalized

煜倫股份有限公司

www.morethanall.com