

SPECIFICATIONS

Electrical:

- 1.Current Rating: 1.0A / contact terminal
- 2.Voltage Rating: 30V DC
- 3.Contact Resistance: 30 mΩ Max
- 4.Dielectric Withstanding Voltage: 100 V AC
- 5.Insulation Resistance: 100 MΩ Min

Mechanical:

- 1.Mate force: 35N (Max)
- 2.Withdrawal force: 8N (Min) , initial

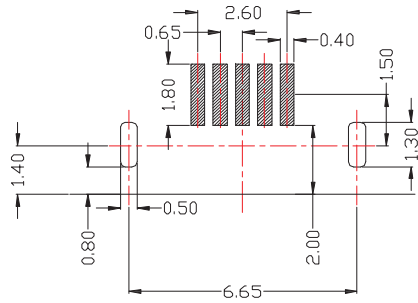
Material:

- 1.Hook: SUS 301
- 2.Contact: Phosphor Bronze
- 3.Shell: SUS 301
- 4.Insulator: PA6T

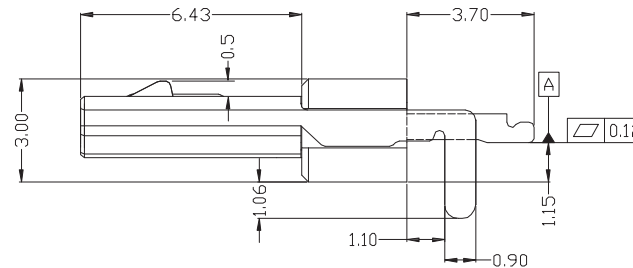
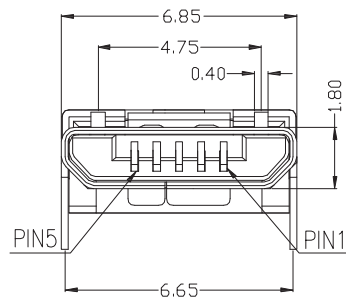
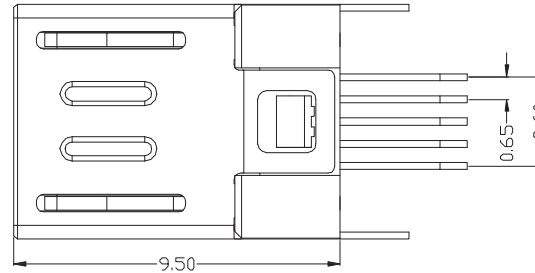
Finish:

- 1.Contact: Plated Gold in Mating Area ;
Tin Plated on Solder Balls ;
Nickel under plated overall
- 2.Shell: Nickel under Plated surface layer

CONTACT NUMBER	SIGNAL NAME
PIN 1	VBUS
PIN 2	D-
PIN 3	D+
PIN 4	ID
PIN 5	GND



PCB LAYOUT MOUNTING PATTERN



RoHS Compliant

TOLERANCES ARE

MORETHANALL
PCB CONNECTORS
Cable ASSEMBLIES

DRAWING BY CY

CHECKED BY GENIUS

UNIT / mm

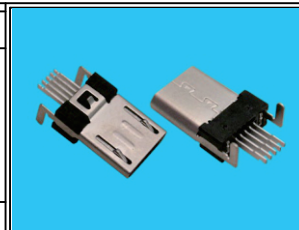
SCALE 1 : 1

DATE

SIZE A4

PPOJECTION

Up to 5 ±0.2
Above 5 ~ 30 ±0.3
Above 30 ~ 50 ±0.4
Above 50 ±0.5
Angle ±0.3°



ORDER INFORMATION

MISB-PWM-5B-LF
SERIES | LEADFREE
5 PIN B TYPE
METAL FOOT
90°SMT
MALE

DESCRIPTION: MICRO USB 5P/M 板端 SMT TYPE

煜倫股份有限公司

www.morethanall.com