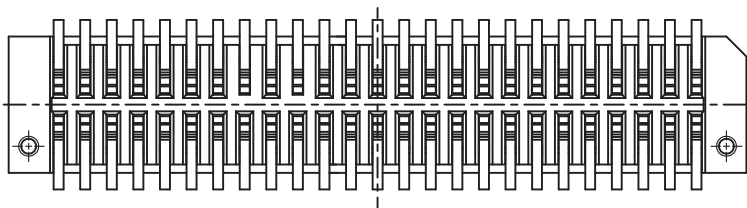
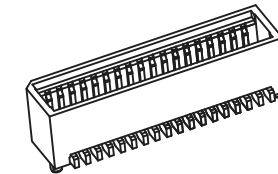
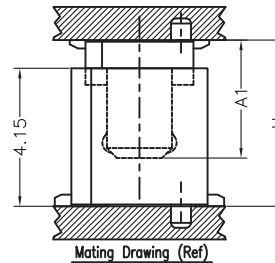
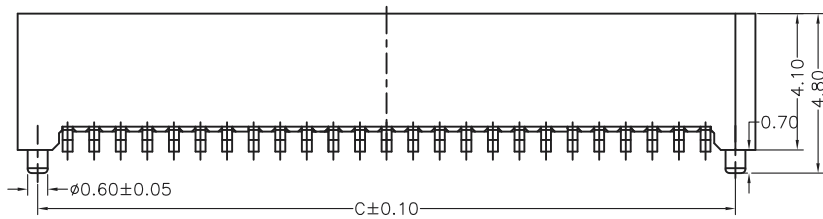


**Specifications**

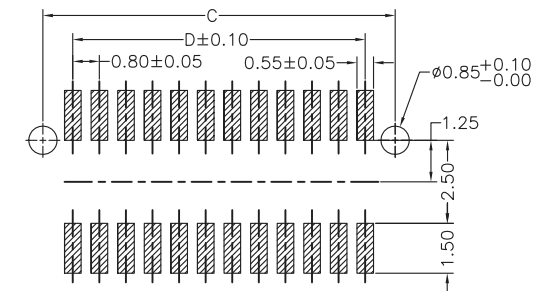
Current Rating:0.5A AC/DC  
 Voltage Rating:100V AC/DC  
 Contact Resistance:40m ohm. Max  
 Insulation Resistance:100Mohm min  
 Withstanding Voltage:500V(r.m.s) For one Minute  
 Operating Temperature Range:-40°C to 105°C  
 Materials:

Insulator:High Temp. Plastic(Nylon 46 UL94V-0)  
 Color:White  
 Contact :Phosphor Bronze  
 Plated:Gold Plated



**\*\*Mating Height Dimension**

P/N(Plug)	P/N(Socket)	Socket Height Dim A1	Mating Height Dim H
NP0820-PV415P-xxx	NP0820-SV085P-xxx	3.55	5.00
NP0820-PV415P-xxx	NP0820-SV135P-xxx	4.05	5.50



**Contacts Dimensions :**

Number of Position	A	B	C	D
10	6.20	4.90	5.00	3.20
20	10.20	8.90	9.00	7.20
30	14.20	12.90	13.00	11.20
40	18.20	16.90	17.00	15.20
60	26.20	24.90	25.00	23.20
80	34.20	32.90	33.00	31.20

PCB Layout

**RoHS Compliant**

TOLERANCES ARE



煜倫股份有限公司

www.morethanall.com

DRAWING BY CY

CHECKED BY GENIUS

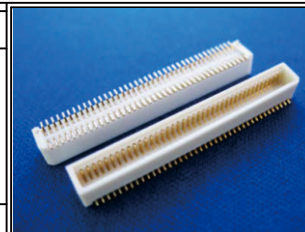
UNIT/ mm  
DATE

SCALE 1:1

SIZE A4

PJECTION

X. ±  
.X ± 0.20  
.XX ± 0.10  
.XXX ±  
ANG ±



**ORDER INFORMATION**

NP0820-PV415P-xxx-LF

SERIES | LEADFREE  
010~100WAY  
POST  
UNMATED HIGH/ 4.15mm  
180°SMT  
MALE

DESCRIPTION: 0.8mm Board To Board Plug 4.15mm Height