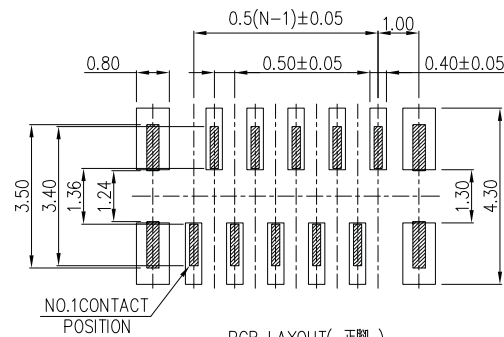
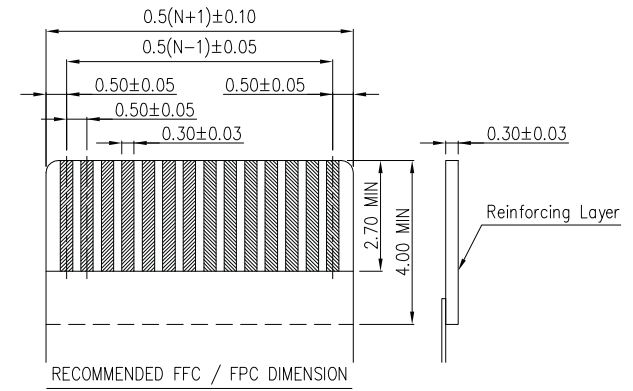
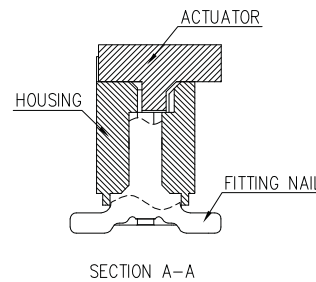
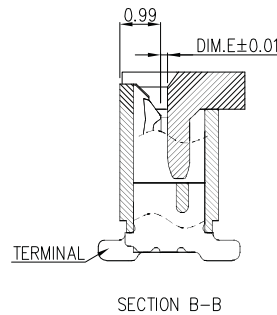
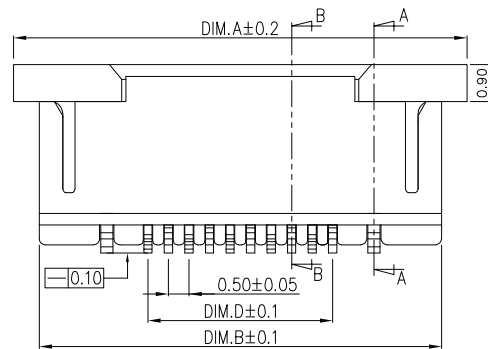


SPEC :

1. Housing: High-Temp Plastic, UL94-V
Color: Nature(Lvory)(LCP)
2. Locker: High-Temp Plastic, UL94-V
Color: Black(LCP)
3. Contact: Phosphor Bronze(C5191)
Initial: 30m Ohms Max.
Voltage Rating: 50V AC,DC
4. Solder Tab: BRASS(C2680)
5. Temperature Rating : -25°C ~ +85°C
6. Dielectric Withstanding Voltage : 500V AC/Min



RoHS Compliant

TOLERANCES ARE

MORETHANALL
PCB CONNECTORS
Cable ASSEMBLIES

DRAWING BY CY

X, ±
.X ± 0.30
.XX ± 0.20
.XXX ± 0.10
ANG ±

CHECKED BY GENIUS

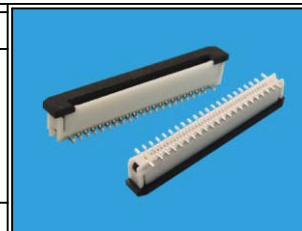
UNIT / mm

SCALE 1 : 1

DATE

SIZE A4

PJECTION



ORDER INFORMATION

FPV-VZAL46-xx-LF
SERIES | | | | | LEADFREE
| | | | | 04-50WAY
| | | | | HIGH 4.6mm
| | | | | L TYPE FOOT
180°SMT | | | | | UPPER CONTACT
ZIF

煜倫股份有限公司

www.morethanall.com

DESCRIPTION: 0.5PH 4.6H 抽屜厚蓋立貼單接正腳位

No. of contacts	Dimensions					No. of contacts	Dimensions					No. of contacts	Dimensions				
	A	B	C	D	E		A	B	C	D	E		A	B	D	E	C
4	8.10	6.85	2.60	1.50	0.14	20	16.10	14.85	10.60	9.50	0.15	36	24.10	22.85	18.60	17.50	0.15
5	8.60	7.35	3.10	2.00	0.14	21	16.60	15.35	11.10	10.00	0.15	37	24.60	23.35	19.10	18.00	0.15
6	9.10	7.85	3.60	2.50	0.14	22	17.10	15.85	11.60	10.50	0.15	38	25.10	23.85	19.60	18.50	0.15
7	9.60	8.35	4.10	3.00	0.14	23	17.60	16.35	12.10	11.00	0.15	39	25.60	24.35	20.10	19.00	0.15
8	10.10	8.85	4.60	3.50	0.14	24	18.10	16.85	12.60	11.50	0.15	40	26.10	24.85	20.60	19.50	0.16
9	10.60	9.35	5.10	4.00	0.14	25	18.60	17.35	13.10	12.00	0.15	41	26.60	25.35	21.10	20.00	0.16
10	11.10	9.85	5.60	4.50	0.14	26	19.10	17.85	13.60	12.50	0.15	42	27.10	25.85	21.60	20.50	0.16
11	11.60	10.35	6.10	5.00	0.14	27	19.60	18.35	14.10	13.00	0.15	43	27.60	26.35	22.10	21.00	0.16
12	12.10	10.85	6.60	5.50	0.15	28	20.10	18.85	14.60	13.50	0.15	44	28.10	26.85	22.60	21.50	0.16
13	12.60	11.35	7.10	6.00	0.15	29	20.60	19.35	15.10	14.00	0.15	45	28.60	27.35	23.10	22.00	0.16
14	13.10	11.85	7.60	6.50	0.15	30	21.10	19.85	15.60	14.50	0.15	46	29.10	27.85	23.60	22.50	0.16
15	13.60	12.35	8.10	7.00	0.15	31	21.60	20.35	16.10	15.00	0.15	47	29.60	28.35	24.10	23.00	0.16
16	14.10	12.85	8.60	7.50	0.15	32	22.10	20.85	16.60	15.50	0.15	48	30.10	28.85	24.60	23.50	0.16
17	14.60	13.35	9.10	8.00	0.15	33	22.60	21.35	17.10	16.00	0.15	49	30.60	29.35	25.10	24.00	0.16
18	15.10	13.85	9.60	8.50	0.15	34	23.10	21.85	17.60	16.50	0.15	50	31.10	29.85	25.60	24.50	0.16
19	15.60	14.35	10.10	9.00	0.15	35	23.60	22.35	18.10	17.00	0.15						

RoHS Compliant

TOLERANCES ARE

MORETHANALL
PCB CONNECTORS
Cable ASSEMBLIES

煜倫股份有限公司

www.morethanall.com

DRAWING BY CY

CHECKED BY GENIUS

UNIT / mm

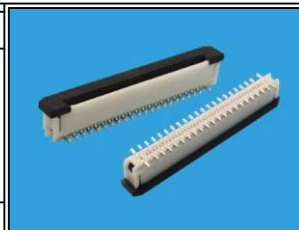
SCALE 1 : 1

DATE

SIZE A4

X, ±
.X ± 0.30
.XX ± 0.20
.XXX ± 0.10
ANG ±

PPOJECTION 



ORDER INFORMATION

FPV-VZAL46-xx-LF
SERIES
LEADFREE
04-50WAY
HIGH 4.6mm
L TYPE FOOT
UPPER CONTACT
180°SMT
ZIF

DESCRIPTION: 0.5PH 4.6H 抽屜厚蓋立貼單接正腳位