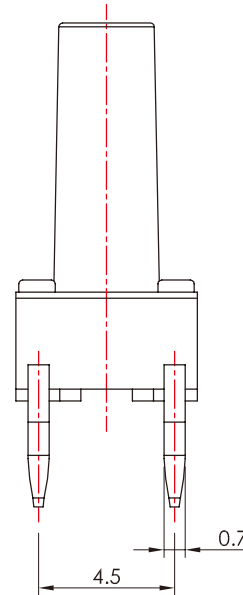
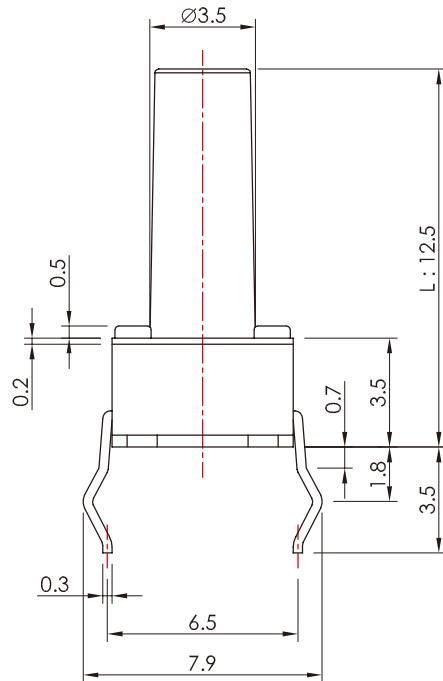
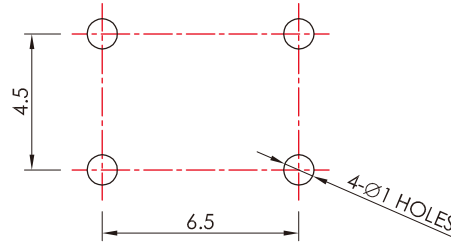


P.C.B LAYOUT



SPECIFICATION

Rating: 50mA 12V DC.

Travel: 0.25±0.1mm.

Contact resistance: 100mΩ Max. (initial)

Operating force: 250±50g.

Minimum load: 10mA 3.3V DC. (reference only)

Operating life: 100,000 Cycles.

Soldering temperature: 250°C Max for 3 Sec.

Soldering time: 1 time only.

Note: Not washable, don't immerse into epoxy and organic solvent.

MATERIAL

Stem: High-temp thermoplastic Nylon 66.

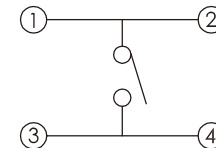
Cover: SPCC, with Tin plating.

Contact: Phosphor bronze, with silver cladding.

Terminal: Brass, with silver cladding.

Base: High-temp thermoplastic Nylon 66, molded black.

CIRCUIT DIAGRAM



RoHS Compliant

TOLERANCES ARE

MORETHANALL
PCB CONNECTORS
Cable ASSEMBLIES

煜倫股份有限公司

www.morethanall.com

DRAWING BY CY

CHECKED BY GENIUS

UNIT / mm

SCALE 1 : 1

DATE

SIZE A4

X, ±

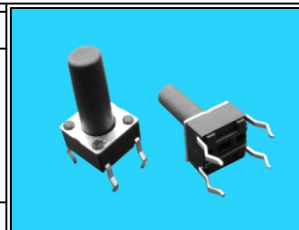
.X ±

.XX ±

.XXX ±

ANG ±

PPOJECTION



ORDER INFORMATION

TSW66-DQ125-250-LF

SERIES | 250g | LEADFREE
HIGH 12.5mm
4 PIN
DIP 180°

DESCRIPTION: Tact Switch