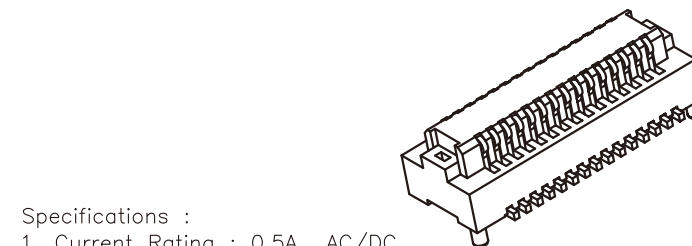
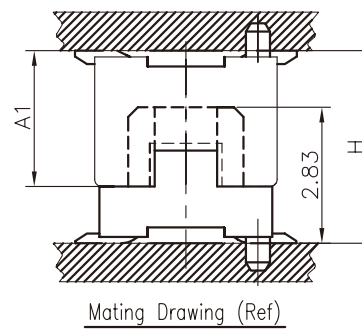


**Mating Dimension

P/N(Plug)	P/N(Socket)	Plug Height Dim A1	Mating Height Dim H
DF12-P28P-xxx	DF12-S12P-xxx	2.83	4.00
DF12-P33P-xxx	DF12-S12P-xxx	3.33	4.50

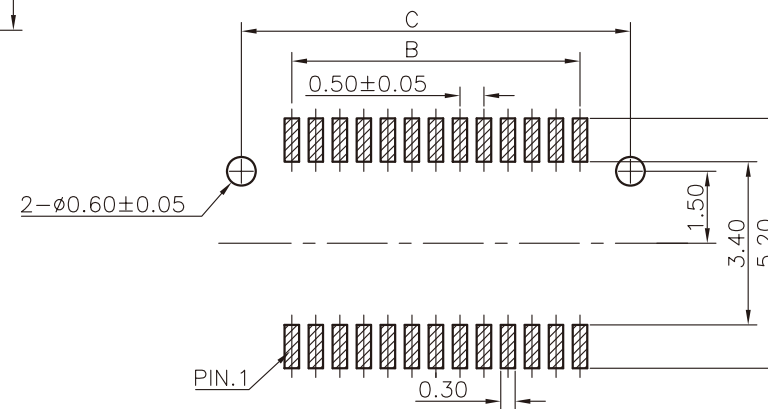
**Contact Dimension :

Contact	DIM. A	DIM. B	DIM. C	DIM. D	Contact	DIM. A	DIM. B	DIM. C	DIM. D
12	5.10	2.50	4.60	3.60	32	10.10	7.50	9.60	8.60
14	5.60	3.00	5.10	4.10	36	11.10	8.50	10.60	9.60
20	7.10	4.50	6.60	5.60	40	12.10	9.50	11.60	10.60
22	7.60	5.00	7.10	6.10	50	14.60	12.00	14.10	13.10
26	8.60	6.00	8.10	7.10	60	17.10	14.50	16.60	15.60
30	9.60	7.00	9.10	8.10					



Specifications :

1. Current Rating : 0.5A AC/DC
 2. Voltage Rating : 50V AC/DC
 3. Contact Resistance : 30m ohm. max.
 4. Insulation Resistance : 100M ohm. min.at 100V DC
 5. Withstanding Voltage : 100V AC for one minute
 6. Operating Temperature Range : -20°C to +105°C
- Material and Plated :
- 1.Housing : High Temp Plastic (LCP UL94V-0 Beige)
 - 2.Contact : Phosphor Bronze
 - 3.Plated: Gold Plated



PCB LAYOUT

RoHS Compliant

TOLERANCES ARE

MORETHANALL
PCB CONNECTORS
Cable ASSEMBLIES

煜倫股份有限公司

www.morethanall.com

DRAWING BY CY

CHECKED BY GENIUS

UNIT / mm

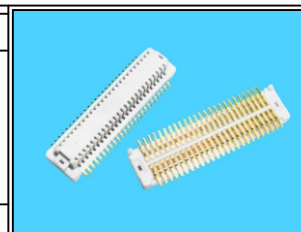
SCALE 1 : 1

DATE

SIZE A4

PPOJECTION

X, ±
X, ±
.XX ±
.XXX ±
ANG ±



ORDER INFORMATION

DF12-S12P-xxx-LF

SERIES
LEADFREE
012~060 WAY
POST
1.2mm HIGH
FEMALE

DESCRIPTION: