

Notes:  
 MATERIAL:  
 Insulator: High Temperature Thermoplastic,  
 Color Black ,UL 94V-0.  
 Contact: Phosphor-Bronze  
 Shell: Stainless Steel  
 PLATING:  
 Contact: Plated 50u" Ni Overall  
 Plated Au Selective Contact Area  
 Plated 100u" Sn Over Ni On Solder Area  
 Shell: Plated 50u" Ni Overall  
 Plated Au Selective Solder Area  
 ⚠ Operating temperature:-40°C~+85°C

**RoHS Compliant**

TOLERANCES ARE



煜倫股份有限公司

www.morethanall.com

DRAWING BY CY

CHECKED BY GENIUS

UNIT / mm

SCALE 1 : 1

DATE

SIZE A4

X. ± 0.50

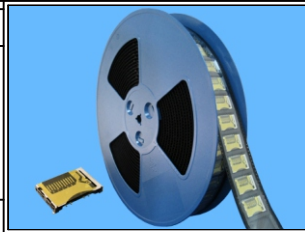
.X ± 0.30

.XX ± 0.20

.XXX ±

ANG ±

PJECTION

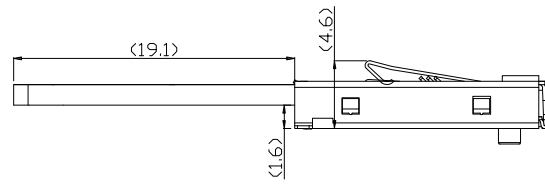
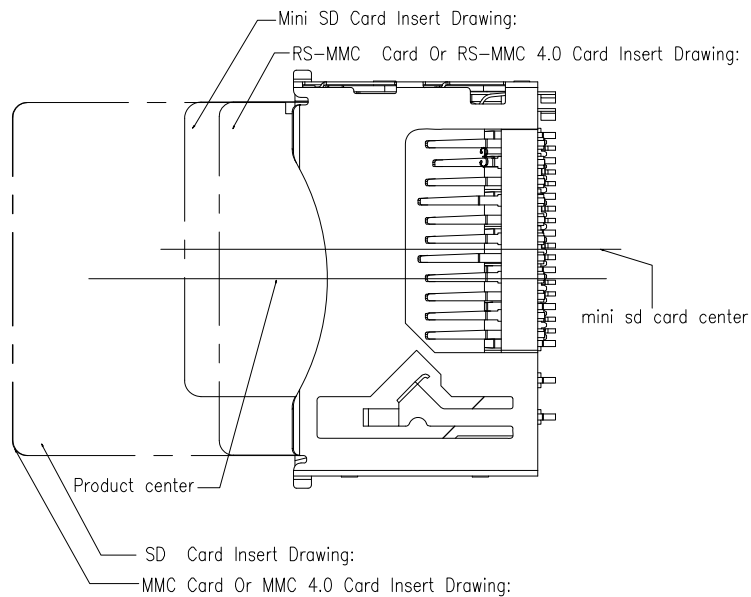


**ORDER INFORMATION**

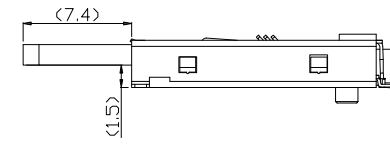
MHC-W21R-601-LF  
 SERIES | REEL | POST 21.00mm | 90°SMT  
 LEADFREE  
 SD&MMC 6 IN 1

DESCRIPTION: SD & mini SD & MMC & RS MMC & MMC 4.0 & RS MMC 4.0 black g/f

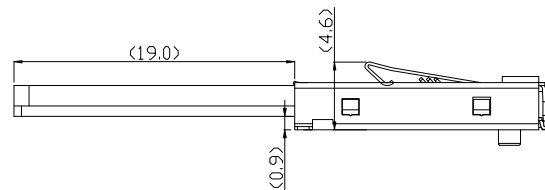




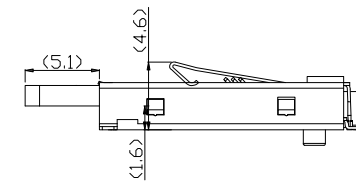
MMC Card Or MMC 4.0 Card Insert Drawing:



Mini SD Card Insert Drawing:



SD Card Insert Drawing:



RS-MMC Card Or RS-MMC 4.0 Card Insert Drawing:

RoHS Compliant

TOLERANCES ARE

**MORETHANALL**  
PCB CONNECTORS  
Cable ASSEMBLIES

煜倫股份有限公司

www.morethanall.com

DRAWING BY CY

CHECKED BY GENIUS

UNIT / mm

SCALE 1 : 1

DATE

SIZE A4

X. ± 0.50

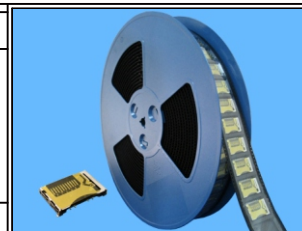
.X ± 0.30

.XX ± 0.20

.XXX ±

ANG ±

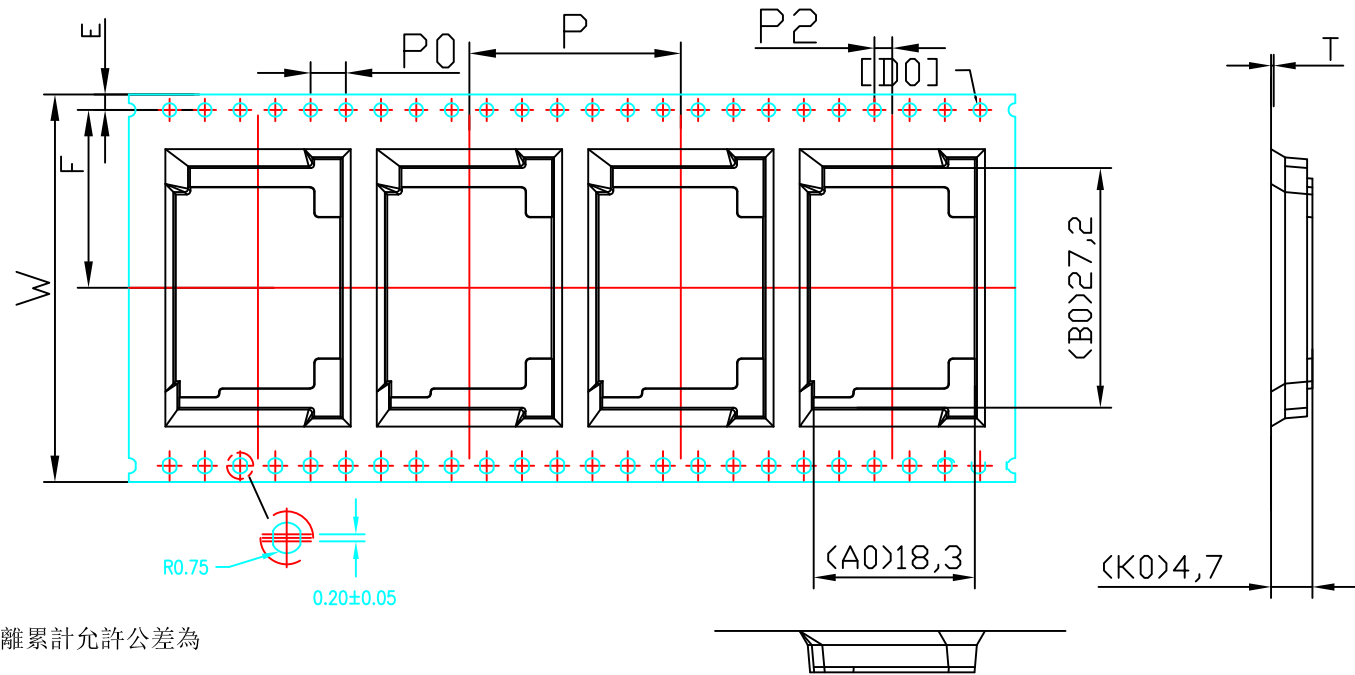
PJECTION



ORDER INFORMATION

MHC-W21R-601-LF  
SERIES REEL POST 21.00mm  
LEADFREE  
SD&MMC 6 IN 1  
90°SMT

DESCRIPTION: SD & mini SD & MMC & RS MMC & MMC 4.0 & RS MMC 4.0 black g/f



1. 上圓孔十個孔距離累計允許公差為 ±0.2mm
2. 帶長250mm內容許彎曲度1mm
3. 所有尺寸定義依循EIA-481-2A系準則定義之設計
4. 材料：黑色PS
5. 材料厚度：0.40±0.05mm
6. 13寸的卷盤包裝米數：12.768M, 包裝粒數：500PCS 前預留20PCS後預留12PCS

注：測量工具

Ⓐ 二次元投影儀 B 卡尺 Ⓒ 高度尺

W	T	A0	A1	B0	B1	K0	K1	項目
44.00 <sup>+0.3</sup> / <sub>-0.3</sub>	0.40 <sup>+0.05</sup> / <sub>-0.05</sub>	18.30 <sup>+0.1</sup> / <sub>-0.1</sub>	0.00 <sup>+0.1</sup> / <sub>-0.1</sub>	27.20 <sup>+0.15</sup> / <sub>-0.15</sub>	0.00 <sup>+0.15</sup> / <sub>-0.15</sub>	4.70 <sup>+0.15</sup> / <sub>-0.15</sub>	0.00 <sup>+0.15</sup> / <sub>-0.15</sub>	尺寸
P	F	E	D0	D1	P0	P2		項目
24.00 <sup>+0.1</sup> / <sub>-0.1</sub>	20.2 <sup>+0.1</sup> / <sub>-0.1</sub>	1.75 <sup>+0.1</sup> / <sub>-0.1</sub>	1.50 <sup>+0.1</sup> / <sub>-0.1</sub>	0.00 <sup>+0.0</sup> / <sub>-0.0</sub>	4.00 <sup>+0.1</sup> / <sub>-0.1</sub>	2.00 <sup>+0.1</sup> / <sub>-0.1</sub>		尺寸

RoHS Compliant

TOLERANCES ARE

**MORETHANALL**  
PCB CONNECTORS  
Cable ASSEMBLIES

DRAWING BY CY

X. ± 0.50

CHECKED BY GENIUS

.X ± 0.30

UNIT / mm

SCALE 1 : 1

.XXX ±

DATE

ANG ±

SIZE A4

P PROJECTION



ORDER INFORMATION

MHC-W21R-601-LF  
SERIES | LEADFREE  
SD&MMC 6 IN 1  
REEL  
POST 21.00mm  
90°SMT

煜倫股份有限公司

www.morethanall.com

DESCRIPTION: SD & mini SD & MMC & RS MMC & MMC 4.0 & RS MMC 4.0 black g/f